



The City of Port St. Lucie

*"Port St. Lucie is a Safe, Beautiful and Prosperous City for All People - Your Hometown."*

# Resident Guide

# Welcome!

121 SW Port St. Lucie Blvd., Port St. Lucie, FL 34984 | 772-871-1775







# 1PSL



Your  
**24/7**  
City Hall

## Now at your fingertips.

This all-in-one system allows residents to connect with the City either via mobile app, phone or web portal. Residents can use 1PSL to:

- Request services and ask questions
- Pay bills
- Learn about City news and upcoming events
- Pinpoint an issue location with GPS
- Attach a photo with your comments
- Receive status updates and resolution notifications

Learn more at: [www.cityofpsl.com/1psl](http://www.cityofpsl.com/1psl)

Get the 1PSL  
App Today!



# Table of Contents

- 4** Welcome Letter
- 7** Strategic Plan Goals
- 8** City of Port St. Lucie Facilities
- 9** City of Port St. Lucie Contacts
- 10** St. Lucie County Contacts
- 11** Clover Park & Public Art Master Plan
- 12** Utility Systems Department
- 13** Port St. Lucie Police Department
- 14** Building Department
- 14-17** Neighborhood Services Department
- 18** Keep Port St. Lucie Beautiful
- 20** Garbage & Recycling
- 20** Emergency Preparedness
- 21** Community Redevelopment Agency
- 22-27** Parks & Recreation
- 24-28** The Saints Golf Course
- 28-29** MIDFLORIDA Credit Union Event Center
- 30-32** Visitor Information
- 33-51** A-Z List

# Welcome to Port St. Lucie

On behalf of the City of Port St. Lucie, it is our pleasure to welcome you. We love Port St. Lucie, and we hope you will too.

As you may know, incorporated in 1961, our City has come a long way in a short time. Originally marketed around the world, and especially in the northeast, as a retirement haven, we have gone from a sales pitch and bedroom community, where only 330 people lived in 1970, to an award-winning, full-service city that is home to more than 195,000 and counting.

As you have probably already discovered, there's a lot to love about Port St. Lucie. We are blessed by natural resources that epitomize the Florida lifestyle. We're the safest large city in Florida; we have one of the highest rates of homeownership in the country; we're a melting pot, where people of all races and ethnicities live together inclusively; US News & World Report has ranked us as one of the best places to live in America; and we're home to NY Mets Spring Training, a Club Med and much more.

As you settle in, we invite you to call on us if you have any questions about your new community, the City or our services. We are building something special in Port St. Lucie—a safe, beautiful and prosperous city for all people—and our citizens can be found at the heart of our strategic blueprint for the future and all our major successes to date. We want you to be an active part of our City government, our community, the implementation of our strategic plan, and there are many opportunities for you to get involved, including serving on a board or committee, volunteering with Keep Port St. Lucie Beautiful, taking part in the Neighborhood Improvement and Community Engagement (NICE) Program, participating in our Annual Citizen Summit and attending our award-winning City University program. Additionally, we're sure that your HOA or neighborhood organization would appreciate your involvement, as would our hundreds of charitable, social, fraternal and church organizations.



In addition to being a phone call, e-mail or visit away, we are also happy to highlight the following resources, which may be of interest to you:

**[www.cityofpsl.com](http://www.cityofpsl.com)**

On the City’s website, you can discover more about the City government, including events, public meetings, and services, explore our interactive maps, pay your water bill and much more. The City also is very active on social media. Please follow us on Facebook, Instagram, Twitter and Nextdoor.

**[www.cityofpsl.com/StrategicPlan](http://www.cityofpsl.com/StrategicPlan)**

Learn more about the City’s strategic blueprint for building a better tomorrow and learn how you can be involved.

**[www.cityofpsl.com/News](http://www.cityofpsl.com/News)**

Find the latest news about our City, including tv and radio, and sign up for one or all of our many e-mail newsletters.

**PSL-TV20**

Watch public meetings and programming on PSL-TV20. PSL-TV is available on Comcast (Channel 20), AT&T Uverse (Channel 99) and the City’s webpage.

**Port St. Lucie at 50**

A City for All People. Available from the Port St. Lucie Historical Society Gift Shop at [www.pslhistory.org/gift-shop.html](http://www.pslhistory.org/gift-shop.html), this is the history book on our City’s first 50 years.

**[www.cityofpsl.com/1PSL](http://www.cityofpsl.com/1PSL)**

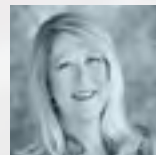
You can always send comments or questions you may have and we will respond promptly.



Mayor  
Gregory J. Oravec



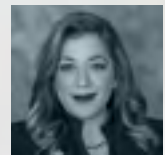
Vice Mayor  
Shannon Martin,  
District 3



Councilwoman  
Stephanie Morgan,  
District 1



Councilman  
John Carvelli,  
District 2



Councilwoman  
Jolien Caraballo,  
District 4

Find your district on the City Council District Representative Map at [www.cityofpsl.com/districts](http://www.cityofpsl.com/districts)

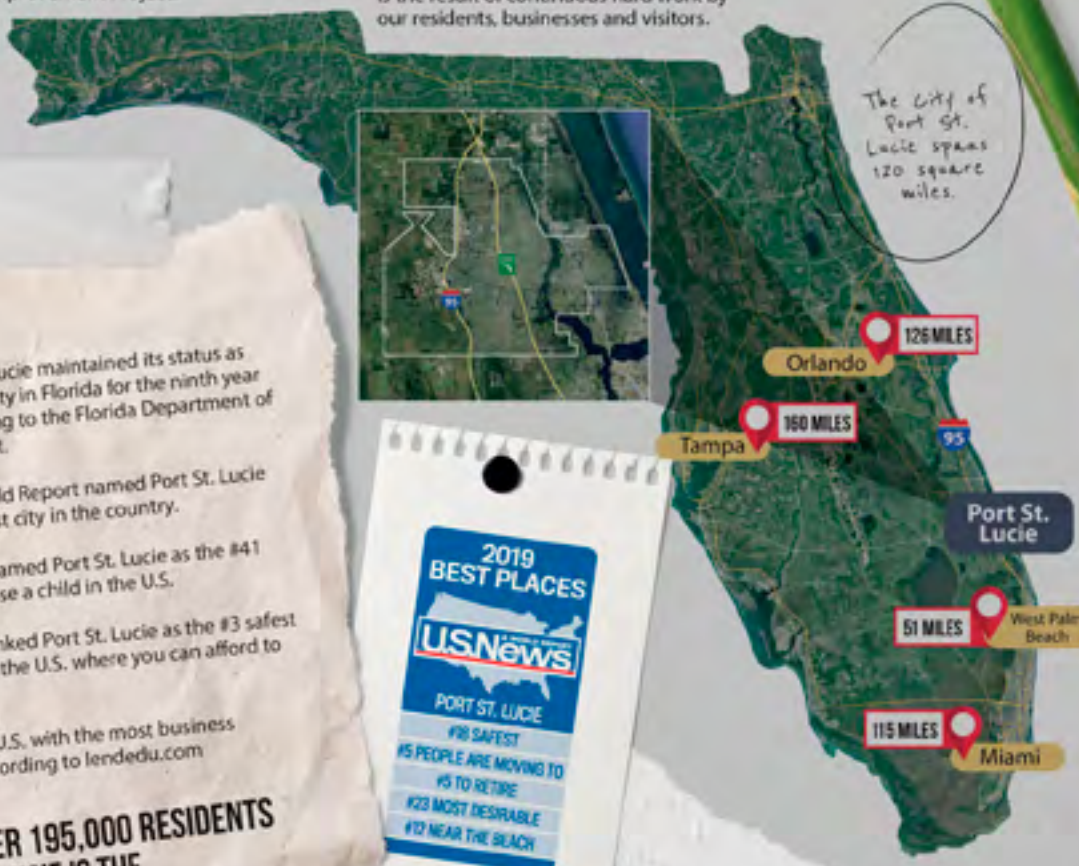
Port St. Lucie had topped numerous Best Places lists in national and international publications, including U.S. News & World Report, Realtor.com, BankRate.com and more. To read all about them, visit [www.cityofpsl.com/goodnews](http://www.cityofpsl.com/goodnews).

### Stewards for the Environment

Our leaders have been fighting for our rivers and natural resources at a local level for the past 20 years through a variety of efforts. These include one of the largest septic-to-sewer conversions in the country, building hundreds of acres of stormwater treatment areas, the McCarty Ranch Water Quality Project and Eastern Watershed Improvement Project.

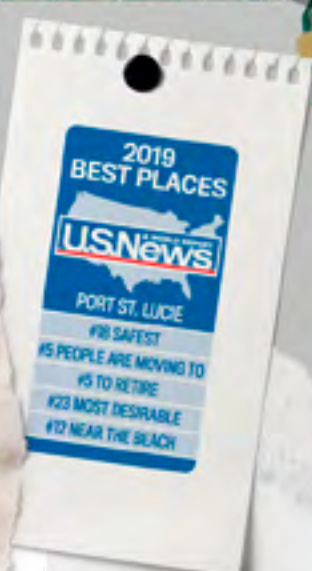
### Clean & Beautiful

The City is nearly litter-free, according to the Keep America Beautiful Community Appearance Litter Index. This distinction is the result of continuous hard work by our residents, businesses and visitors.



### Safety

- In 2019, Port St. Lucie maintained its status as the safest large city in Florida for the ninth year in a row, according to the Florida Department of Law Enforcement.
- U.S. News & World Report named Port St. Lucie as the 18th safest city in the country.
- Safewise.com named Port St. Lucie as the #41 safest city to raise a child in the U.S.
- Realtor.com ranked Port St. Lucie as the #3 safest place to live in the U.S. where you can afford to buy a home.
- #7 city in the U.S. with the most business openings, according to lendedu.com



**WITH OVER 195,000 RESIDENTS  
PORT ST. LUCIE IS THE  
3RD LARGEST CITY IN SOUTH FLORIDA  
7TH LARGEST CITY IN THE STATE**

### Happiness

Nearly 80 percent of residents who participated in a statistically-valid Citizen Survey in 2018 and 2019 rated Port St. Lucie as an excellent or good place to live -- which is up 19 percent from those surveyed almost 10 years earlier. Respondents' evaluations for the overall quality of life, neighborhoods, the City as a place to retire, raise children and live -- and the overall appearance and image -- have each improved considerably since a baseline survey was conducted in 2009. In fact, U.S. News & World Report ranked Port St. Lucie as the 23rd most desirable place to live in the U.S. WalletHub ranked us as the 45th happiest city in America and the #143rd most fun city in the nation.

# Strategic Plan Goals

**Safe, Clean and Beautiful**

**Vibrant Neighborhoods**

**Quality Education for All Residents**

**Diverse Economy and Employment Opportunities**

**High Quality Infrastructure and Facilities**

**Culture, Nature and Fun Activities**

**High Performing City Government Organization**

## Mission

To provide **Exceptional Municipal Services** that are **Responsive to our Community** while **Planning for Smart and Balanced Growth** that is managed in a **Financially Responsible Manner**.

## Vision

Port St. Lucie has **Great Neighborhoods**; excellent **Educational Opportunities** for lifelong learning; a **Diverse Local Economy** and **Employment** options; **Convenient Transportation**; unique **Natural Resources** including the **St. Lucie River**; and **Leisure Opportunities** for an **Active Lifestyle**.

*"Port St. Lucie is a Safe, Beautiful and Prosperous City of All People - Your Hometown."*

[www.cityofpsl.com/strategicplan](http://www.cityofpsl.com/strategicplan)



# The City of Port St. Lucie Facilities



## Hours for City Hall Locations

121 SW Port St Lucie Blvd., Port St. Lucie, FL 34984

### City Hall (Building A)

Monday–Friday, 8 a.m. to 5 p.m.

### Building Department (Building B)

Monday–Friday, 8 a.m. to 5 p.m.

### Building Department Lobby:

Monday, Tuesday, Thursday, Friday, 8 a.m. to 4:30 p.m.  
Wednesday, 8 a.m. to 4 p.m.

### Police Department (Building C)

24 hours a day, 7 days a week  
Records, Monday–Friday, 7:30 a.m. to 5 p.m.

### Utility Customer Service

Monday–Friday, 8 a.m. to 5 p.m.  
772-873-6400 • utility@cityofpsl.com

## Hours for City Facilities

### MIDFLORIDA Credit Union Event Center

9221 SE Civic Center Pl, Port St. Lucie, FL 34952  
Monday–Friday, 8 a.m. to 5 p.m.

Recreation & Fitness:  
Monday-Thursday, 6 a.m. to 9 p.m.  
Friday, 6 a.m. to 8 p.m.  
Saturday-Sunday, 8 a.m. to 6 p.m.

### Port St. Lucie Community Center

2195 SE Airoso Blvd, Port St. Lucie, FL 34984  
Daily, 8 a.m. to 8 p.m.

### Robert E. Minsky Gymnasium

750 SW Darwin Blvd, Port St. Lucie, FL 34953  
Daily, 8 a.m. to 8 p.m.

### Botanical Gardens

2410 SE Westmoreland Blvd, Port St. Lucie, FL 34952  
Wednesday-Saturday, 10 a.m. to 4 p.m.  
Sundays, 12 to 4 p.m.

### The Saints Golf Course

2601 SE Morningside Blvd, Port St. Lucie, FL 34952  
Daily, 6:30 a.m. to 5:30 p.m.

*Driving Range:* Friday-Tuesday, 7 a.m. to sunset,  
Wednesdays, 7 a.m. to 4 p.m., Thursdays, 8 a.m. to sunset.



CityofPSL



CityPortStLucie



@CityPortStLucie



City of Port St. Lucie



CityPortStLucie



# City of Port St. Lucie Contacts

Incorporated in 1961, The City of Port St. Lucie is part of St. Lucie County. According to the United State Census Bureau's 2018 population estimate, Port St. Lucie is the seventh largest city in Florida with over 195,000 residents. The City of Port St. Lucie occupies an area of 120 square miles and is located about 50 miles north of West Palm Beach.

## Homeowner's Contacts

### Gas and Electric:

- Florida City Gas, 800-993-7546
- Florida Power & Light, 800-468-8243

### Trash and Recycling Services:

- Waste Pro, 772-595-9390

### Telephone, Cable and Internet:

- AT&T DIRECTV, 844-723-0252
- Comcast, 800-266-2278
- Blue Stream, 772-345-6000
- Cable Plus, 772-345-6000
- Hometown Communications, 772-345-6000

### PSL Utility Connection Support & Billing:

- 772-873-6400
- utility@cityofpsl

772-871-1PSL(1775)	<b>1PSL, Your 24/7 City Hall</b>
772-871-5042	<b>Animal Control</b>
772-871-5132	<b>Building Department</b>
772-344-4356	<b>Business Tax Office</b>
772-871-5294	<b>City Attorney's Office</b>
772-871-5157	<b>City Clerk</b>
772-871-5159	<b>City Council &amp; Mayor</b>
772-871-5163	<b>City Manager</b>
772-807-4488	<b>MIDFLORIDA Credit Union Event Center</b>
772-871-5010	<b>Code Compliance</b>
772-871-5219	<b>Communications</b>
772-344-4342	<b>Community Redevelopment</b>
772-871-7340	<b>Emergency Management</b>
772-344-4390	<b>Finance</b>
772-344-4335	<b>Human Resources</b>
772-871-5103	<b>Keep Port St. Lucie Beautiful</b>
772-344-4342	<b>Lien Services Division</b>
772-871-5010	<b>Neighborhood Services</b>
772-878-2277	<b>Parks &amp; Recreation</b>
772-871-5213	<b>Planning &amp; Zoning</b>
772-871-5000	<b>Police (General)</b>
772-871-5100	<b>Public Works</b>
772-871-7371	<b>Risk Management</b>
772-340-0220	<b>St. Lucie West Services District</b>
	<b>Utility Connection Support (available in person by appointment only)</b>
772-812-4858	<b>City of Port St. Lucie Volunteering</b>

# St. Lucie County Contacts

Incorporated in 1905, St. Lucie County is comprised of the City of Port St. Lucie, City of Fort Pierce (county seat) and St. Lucie Village. Between 2000 and 2010, St. Lucie County was one of the fastest-growing counties in the U.S. with a total population increase of more than 80,000 during that time frame. As of 2018, St. Lucie County has a population of roughly 313,000. St. Lucie County is 572 square miles and has 21 miles of coastline.

772-462-1400	<b>Board of County Commissioners</b>	772-462-1670	<b>Office of Management &amp; Budget Department</b>
772-462-6900	<b>Clerk of the Court</b>	772-462-1432	<b>Parks, Recreation &amp; Facilities Department</b>
772-462-1777	<b>Community Services Department</b>	772-462-2822	<b>Planning &amp; Development Services Department</b>
772-336-8608	<b>Council on Aging</b>	772-462-1000	<b>Property Appraiser</b>
772-462-1400	<b>County Administration</b>	772-462-8100	<b>Public Safety &amp; Communications Department</b>
772-462-1441	<b>County Attorney's Office</b>	772-462-2511	<b>Public Works Department</b>
772-595-9999	<b>Chamber of Commerce</b>	772-871-2183	<b>Ravenswood Pool</b>
772-336-6250	<b>Economic Development Council</b>	772-462-5000	<b>School Board</b>
772-462-2526	<b>Environmental Resources Department</b>	772-462-7300	<b>Sheriff's Office</b>
772-621-3400	<b>Fire District</b>	772-462-1768	<b>Solid Waste Department</b>
772-871-2115	<b>Clover Park Field (St. Lucie Mets)</b>	772-462-1500	<b>Supervisor of Elections</b>
850-488-4676	<b>Florida Fish and Wildlife Conservation Commission</b>	772-462-1650	<b>Tax Collector</b>
772-462-1100	<b>General Information</b>	772-464-8878	<b>Treasure Coast Connector</b>
772-462-3800	<b>Health Department</b>	772-462-1660	<b>UF/IFAS Cooperative Extension</b>
772-462-1000	<b>Property Appraiser</b>	772-462-1150	<b>Utilities Department Customer Service</b>
772-462-1692	<b>Mosquito Control &amp; Coastal Management Services</b>	772-337-5670	<b>Veteran Services Division</b>
772-344-4060	<b>Port St. Lucie Driver License Office</b>	772-462-1500	<b>Voter Registration</b>
772-462-1650	<b>Port St. Lucie Driver License Office &amp; Motor Vehicle</b>	772-785-5833	<b>Oxbow Eco-Center</b>



## City of Port St. Lucie Population

Port St. Lucie captured 88% of St. Lucie County’s population growth between 2000 and 2019 – with 103,100 new residents. This equates to a sustained annual average of more than 5,500 new residents and a sustained annual growth rate of 3.96%. The City equates to more than 60% of St. Lucie County’s population.

195,248  
and growing



**Clover Park**  
31 Piazza Drive, Port St. Lucie, FL  
772-871-2132

Let’s play ball! Clover Park is the spring training home of the New York Mets, summer home of the St. Lucie Mets and the hub for all New York Mets minor league operations. When the players are not in town, the Sports Complex, which is owned by St. Lucie County, is used for a variety of events ranging from festivals, concerts, baseball tournaments, RV shows and religious services. The stadium’s seating capacity is 7,800.

Baseball games are a great way to connect with friends and family, enjoying a game that turns dramatic with the sharp crack of a bat. Don’t just sit at home watching your favorite team on TV — get yourself to the stadium and be part of the excitement!

**Get your tickets here:**  
New York Mets - [www.mets.com](http://www.mets.com)  
St. Lucie Mets - [www.stluciemets.com](http://www.stluciemets.com)



## Public Art Master Plan

Public art adds enormous value to the cultural, aesthetic and economic vitality of a community. The Public Art program contributes to the community’s identity, fosters community pride and a sense of belonging and enhances the quality of life for its residents and visitors.

The City has been awarded funding from the National Endowment for the Arts to help with the development of an Arts Master Plan. The plan will set the standard for how we begin to implement and enjoy public art while also celebrating our community’s ingenuity and artistic expressions. Types of art that can be found throughout the City include:

- Sculptures
- Traffic Box cover art
- Fountains or water elements
- Earthworks and environmental artworks
- Decorative, ornamental or functional elements designed by an artist
- Murals, drawings and paintings
- Monuments

**Be a part of the beautification process; learn more at [www.cityofpsl.com/art](http://www.cityofpsl.com/art).**

# Port St. Lucie Utility Systems Department

772-873-6400 | [utility@cityofpsl.com](mailto:utility@cityofpsl.com) | [utility.cityofpsl.com](http://utility.cityofpsl.com)

## Emergency Service

The Utility Systems Department can be reached 24 hours a day, every day for emergencies.

## Start or Stop Service

Applications to start new service in your name at a property with existing service can be done online. Once completed, all required fees will need to be paid to start service. A one-business-day advance notice is required or there will be a fee for same-day service.

## Terminating Service

Requests to turn service off and out of your name can be done online. You will need to schedule a final meter reading. A final bill will be mailed to you with any deposits credited to the account.

## Pay Your Bill

Customers are billed monthly for water and/or wastewater service. The rates include a base facility charge and consumption charges. Your monthly payment can be made several ways. Payments can be made over the phone, online, by Dropbox or by mail.

## Water Quality

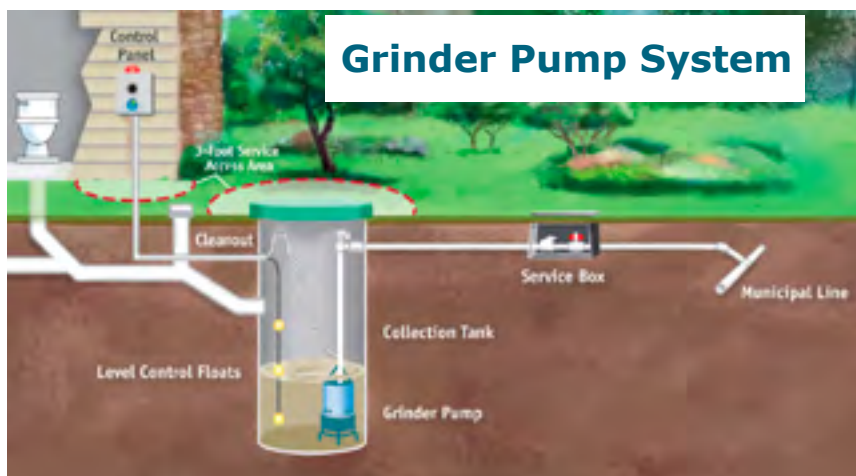
Port St. Lucie is committed to providing clean, safe and great-tasting drinking water to our customers. The drinking water provided by the Utility Systems Department continues to meet all Federal and State requirements. Read the full report at [www.cityofpsl.com/waterqualityreport](http://www.cityofpsl.com/waterqualityreport).

## Education

Through presentations, educational videos and materials, the Utility Department will visit your school or organization. Staff will demonstrate how the water and wastewater treatment process works and teach children the importance of protecting and maintaining our systems.

## Sewer Expansion Program

The ongoing Sewer Expansion Program ensures that failing septic systems will be taken out of service to avoid further contamination to the shallow water supply, and that new homes and businesses would be required to connect to City sewer. Since its inception, more than 8,700 septic systems have been converted to City sewer and more than 25,000 new grinder systems as of June 2020, have been installed. The City's low-pressure wastewater collection system has grown to be the largest of its kind in the nation.



## 10 Years, No Interest

When a resident needs or desires to connect to City sewer, the homeowner can finance their connection fees over a 10-year period with no interest. For current rates, visit [utility.cityofpsl.com](http://utility.cityofpsl.com).



**Protect our canals from pollution**



**Prevent leakage of waste to the ground water**



**Recycle water for irrigation & waste for compost**

For more information about conversions, including fees and the application process, please call 772-873-6400.



# Port St. Lucie Police Department

772-871-5000 | [www.cityofpsl.com/police](http://www.cityofpsl.com/police)

 PortStLuciePolice

 @PSLPolice



## Explorers

The program is for young adults, ages 14 to 21 to get an up-close look at the criminal justice field through activities and community involvement.

## Animal Control

772-871-5042

Enforces the City ordinances concerning the welfare and protection of all domestic animals and wildlife within the City. Call to report a lost or found pet.

## Police Athletic League (PAL)

772-398-9436

Our 501(c)(3), nonprofit, crime prevention organization provides youth ages 8 to 18 years with the opportunity to become involved in educational, cultural and sporting activities, in an effort to help them reach their full potential in life.

## Solicitors

Anyone who canvasses, goes door-to-door for sales or operates a mobile food wagon is required to obtain a solicitor's permit from the Port St. Lucie Police Department, which can be reached at 772-871-5000. In some cases, an occupational license may also be required in addition to a solicitor permit.

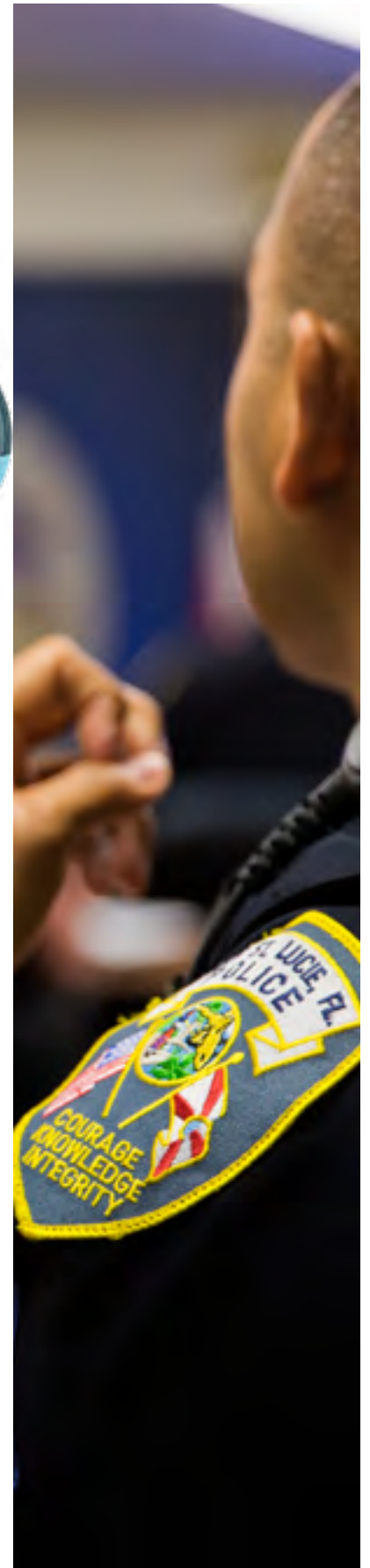
## Partners Against Crime

Partners Against Crime is a new program offered by the Port St. Lucie Police Department that focuses on strengthening partnerships between the community and police department. This will be accomplished through increased communication and interactions with local businesses in our city.

## Citizens Police Academy

772-344-4052

The Port St. Lucie Police Department's Citizens Police Academy is an extension of our agency's community-oriented policing philosophy. The program offers City residents a preview into their police department's inner workings during a series of demonstrations, lectures and discussions. Each session gives the opportunity to listen to presentations and interact with representatives of the Command Staff, Neighborhood Policing Bureau, Criminal Investigations Division, Support Services areas and specialty units.



# Neighborhood Services

772-871-5010 | [www.cityofpsl.com/nice](http://www.cityofpsl.com/nice)

To better serve the community, the city is working with our neighborhoods to identify and correct specific issues and problems. The Neighborhood Services Department is responsible for many issues that affect individuals and their homes, neighborhoods and the larger community in Port St. Lucie. There are multiple divisions within the department, each with differing responsibilities.

We want to hear from you! You can find your neighborhood, sign up for e-newsletters, view the neighborhood meeting schedule and more by visiting [www.cityofpsl.com/NICE](http://www.cityofpsl.com/NICE). Each neighborhood has its own landing page where you can learn more about what the area has to offer and how you can get involved.

Welcome to the Neighborhood!



## Neighborhood Improvement & Community Engagement

Administered by the City’s Neighborhood Services Department, the NICE Program is building community engagement and improving the fabric of the community neighborhood by neighborhood.

At NICE neighborhood meetings and events, citizens envision and help create neighborhood plans and programs that are adopted by the City Council. The initiatives have worked towards defining neighborhood boundaries, naming neighborhoods and kickstarting neighborhood-driven improvements. The neighborhoods continue to work with the City through the NICE program to identify, plan and collaborate on future improvement projects and programs. The NICE Program is funded through revenue the City receives when residents recycle. The more you recycle the more we can do!

# Building Department

772-871-5132 | [www.cityofpsl.com/building](http://www.cityofpsl.com/building)

Are you building a new residence, adding on or altering an existing structure?

The Port St. Lucie’s International Accreditation Service (IAS) Building Department is here to assist you and your contractor through the permitting process. PSL’s Building Department offers more than 30 permit applications online. The on-line application process allows for electronic submittal, routing, review, and issuance of approved e-permit types. Contractors can track and manage thier permit, upload revisions, and download approved documents.

To improve customer service, reduce wait times and streamline the permitting process, the City established an innovative outdoor lane. The Building Department’s drive-up window is the first in the Nation to provide a convenient way for the public and contractors to pick up permits and public records, drop off inspections, plan reviews and various departmental paperwork.







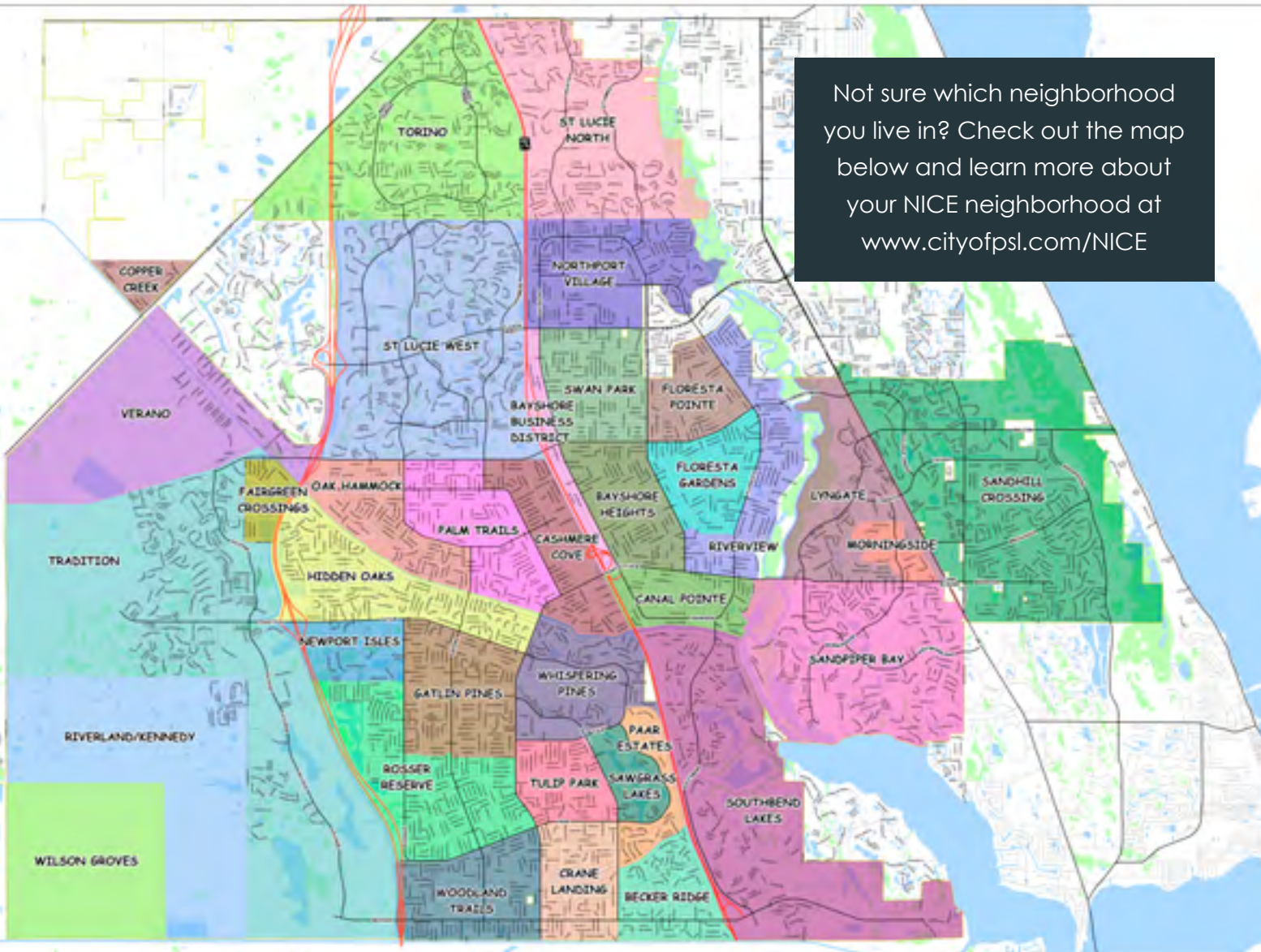
The City of Port St. Lucie's City University is a free nine-week program designed to help residents learn about their City government. Participants will learn about a wide variety of topics like how decisions are made, how City funds are allocated and how departments operate. Plus, you'll discover the current status and future plans for Port St. Lucie's development and proposed projects. You'll meet residents with shared interests in the City, participate in discussions, learn how to interact and volunteer with the community and tour City facilities. Overall you will become a more informed and involved citizen.

The program is free but, you must be living or working in Port St. Lucie when you register and commit to a minimum attendance of 7 out of the 9 sessions. At the end of the program participants will receive a certificate of completion. This program has been developed for adults. However, high school juniors and seniors may apply with a letter of recommendation from a teacher.

Check for the dates for the next session at [www.cityofpsl.com/cityuniversity](http://www.cityofpsl.com/cityuniversity)

[NICE@cityofpsl.com](mailto:NICE@cityofpsl.com)  
772-871-7395

Not sure which neighborhood you live in? Check out the map below and learn more about your NICE neighborhood at [www.cityofpsl.com/NICE](http://www.cityofpsl.com/NICE)



# Code Compliance

Neighborhood Services

**Port St. Lucie's Code Division is one of only three in the nation to receive a 4-Star Accreditation from the American Association of Code Enforcement.**

## Functions - 772-871-5010

The Code Compliance Division enforces property maintenance, safety and zoning codes that affect the quality of life in Port St. Lucie. Through education and enforcement, Code Compliance Officers facilitate compliance with City laws and code, empower community self-help and develop public outreach programs to help ensure attractive neighborhoods, vibrant businesses and a peaceful and enjoyable community for everyone.

## The Importance of Code Compliance

- Protect the safety and welfare of Port St. Lucie residents
- Maintain and increase property values
- Reduce vandalism
- Eliminate blight

## Nuisance Abatement Program

The Nuisance Abatement staff work to enforce property maintenance, safety and zoning codes that affect the quality of life in Port St. Lucie. It is designed to bring the property into compliance as soon as possible.

## High Grass & Weeds

Grass cannot exceed 12 inches tall on all improved property (property with a structure built upon it) within the City of Port St. Lucie.

## Commercial Vehicles

Commercial vehicles are prohibited from being parked or stored in all residential areas except while working at a job site. Examples include dump trucks, tow trucks or trucks with six wheels, step vans, chemical tank trucks and any pickup or van openly storing equipment, materials or supplies.

## Vacant Lot Encroachment

This is a complaint-driven ordinance on unimproved lots where the vegetation is encroaching onto the developed property is abutting or adjoining the property line of the unimproved property from the tenant, property owner, lessee or occupants. Certain inspections and requirements will be necessary upon complaint entry.

## Dumping

Dumping of trash, debris, construction materials, grass or tree clippings or other items anywhere within the City of Port St. Lucie is strictly prohibited. The City-contracted waste hauler, Waste Pro, can be reached at 772-595-9390. They will pick all items other than hazardous waste when the items are placed at the curb of a residence. They will not pick up items that are put by the roadway in front of a vacant lot.

## Code of Ordinances

All City codes can be found on the City's website under the Government tab.

## Garage Sales

Residents can advertise on the City website and the City's e-newsletter free of charge. A garage sale shall not be run as a business or create a nuisance. Those holding garage sales are limited to one sign on their property advertising the sale. City will advertise three times a year at [www.cityofpsl.com/GarageSale](http://www.cityofpsl.com/GarageSale).

## House Numbers

For safety purposes, all buildings (residence and business) must have the address posted on the front of the structure and be clearly visible from the roadway. The numbers must be at least 4 inches high with contrasting color from the background color.

## Inoperative Vehicles

Any vehicle that is not fully capable of being started and driven on the highway may be classified as inoperative. Examples of what may be considered as an inoperative vehicle(s) are: one or more flat tires, without tires, without a battery, up on blocks or without a current tag.

## Open Storage

Any item or material that is kept, left or placed anywhere out of doors is considered as openly stored. This includes items placed, left or stored in carports, front/side or rear yards, inside/behind a fence or inside bed of a trailer.

## Outdoor Sales/Special Events

Anything stored outside of the home is considered open storage and it has to be stored inside an enclosed structure.

**Swales**

The primary function of a swale liner is to maintain an acceptable swale grade in which to convey stormwater into the Drainage Right of Ways. No pyramids, stones, stakes, shrubs, or trees are permitted in the swale area. Swale areas must be kept free of trash, debris and litter to prevent obstruction of the driveway culvert and swale. If a plastic liner has been installed, it must be maintained. If you wish to park in the swale area, you must seek permission from the property owner.

**Parking Prohibitions**

Parking is prohibited on the wide part of the front lawn; parking upon any Federal, State or local public right-of-way within the City or on any unimproved property for the principal purpose of displaying a vehicle for sale; any type of advertisement; not parking 12 inches off the paved roadway and with the flow of traffic.

**Property Maintenance**

The owners of a property within the City shall maintain the exterior of the premises in such a manner to conform with all City codes and ordinances. The exterior of all dwellings and structures shall be maintained in a manner as to be free of: broken glass, crumbling stone, brick or stucco; torn screens; rotted wood; mold and mildew; numerous broken/missing roof shingles; soffit and fascia missing or in disrepair; or any conditions reflective of deterioration or inadequate maintenance.

**Recreation Vehicles**

Vehicles registered as motor homes, recreational vehicles, campers, travel trailers, boats, etc., may be parked in the garage, driveway, side of the residence or 10 feet inside the rear yard. All recreational vehicles must bear a current registration and be in operating condition to be parked in any residential area within the City. No one may stay, live in or use the vehicle while it is parked or stored in a residential area.

**Signs**

Nearly all signs require a sign permit. The sign permit is issued through the Building Department, which can be reached at 772-871-5132. Signs attached to or placed upon any utility pole, street light, sidewalk, curb, fire hydrant, bridge or any other public property, including the swale area, median or public right-of-way, unless specifically authorized, are prohibited.

Visit [www.cityofpsl.com/signs](http://www.cityofpsl.com/signs) for more information.

# Temporary Signs

**1**

**Private Property**

- Obtain **permission** of the property owner if placing on private property.
- On commercial property, set the sign back at least 10 feet from the property line.
- On residential property, set the sign back at least 3 feet from the property line.
- Do not use display lighting.

**2**

**Don't attach signs to poles or street lights.**

**3**

**Keep all temporary signs out of the swale.** The swale is a shallow channel with sloping sides designed for water runoff.

**4**

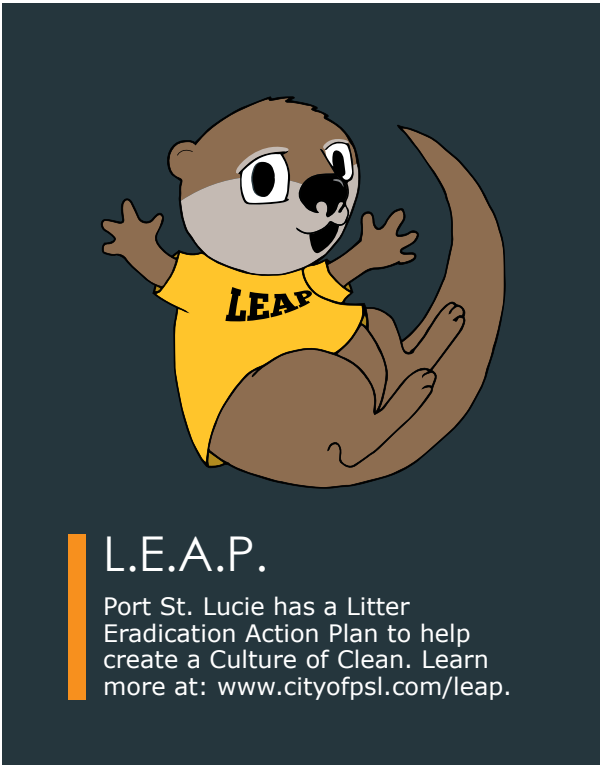
**Keep all temporary signs out of the right-of-way.** The right-of-way may include the street, sidewalk and swales.





# Keep Port St. Lucie Beautiful

772-871-5103 | [www.cityofpsl.com/kpslb](http://www.cityofpsl.com/kpslb) | [kpslb@cityofpsl.com](mailto:kpslb@cityofpsl.com)



*We need you!*

### Adopt-A-Street

Residents and businesses can assist with reducing litter in the City of Port St. Lucie. You can volunteer by adopting a mile of road in your neighborhood and pick up litter a minimum of 12 times a year. Volunteers will receive supplies and a sign will be placed along the road with your group name.

### Events

Visit [www.cityofpsl.com/KPSLB](http://www.cityofpsl.com/KPSLB) for dates and times of events. Major events include: Tree Giveaways, Household Hazardous Waste Collection Days and Great American Cleanup.

### Committee

Keep Port St. Lucie Beautiful Committee consists of nine members and a coordinator. The Committee addresses issues that relate to the physical and visual aspects of our community environment.

### Education

Keep Port St. Lucie Beautiful focuses on education and positive behaviors to promote litter reduction, improving recycling, beautification and how it affects the environment.

### Litter Hotline

772-871-7000

The City's litter hotline allows citizens to report conditions such as commercial or residential litter, illegal dumping, debris in a canal and general litter in Port St. Lucie. Free cigarette butt litter stands, ash receptacle cups are available while supplies last.

### Tree Challenge

The City of Port St. Lucie is honored to be a Tree City USA. Residents and local businesses are asked to plant a tree as we continue to maintain our status and is also a great opportunity to improve the urban tree canopy. You can add your new tree to the city's tree map at [www.cityofpsl.com/trechallenge](http://www.cityofpsl.com/trechallenge).

### Hazardous Waste

Household hazardous waste cannot be picked up with regular household garbage but can be disposed in one of two ways: through the City's bi-annual Household Hazardous Waste Collection Day (March/October) or at the St. Lucie County Bailing and Recycling Facility.

For more information about Keep Port St. Lucie Beautiful (KPSLB) biannual drop-off event, call 772-871-5103.



# Stormwater Best Practices

[www.cityofpsl.com/npdes](http://www.cityofpsl.com/npdes)

## Swales

If your house has a swale in the front or side yard with a black, plastic liner, please keep it clear of debris and vegetation. It is the homeowner's responsibility to maintain a swale. Properly maintaining your swale helps with flood control. When the City receives heavy rains, a blocked swale can affect the drainage system and keep standing water in your swale longer than it needs to be. Allow a minimum of 72 hours, after the last rain event, for the sun to evaporate the excess water and the canal levels to subside which will then allow the necessary storage for the swales to drain.

## Painting

All paints, solvents and adhesives contain chemicals that are harmful to wildlife and humans, which is why proper handling and disposal of these products is important. Toxic chemicals from liquid, solid products, cleaning residues or rags may enter waterways via the storm system. It is especially important not to clean brushes in an area where these contaminants are exposed to the weather and could be washed into the storm system during a rain event.

## Automotive Maintenance

Many common car maintenance routines contribute to water pollution. Power washing engine blocks or pouring used motor oil into storm drains pollutes our waterways. These pollutants cause harm to plant and aquatic life. Oil and grease can clog fish gills and block oxygen from entering the water. If oxygen levels get too low, aquatic animals die.

## Grass Clippings

Grass clippings and leaves are considered a source of pollution. When grass clippings and leaves decompose, they release nutrients. These nutrients can cause algae blooms in our waterways. Grass clippings should be bagged or blown back onto the lawn. Grass clippings and yard waste should never be blown or left in the street or storm drains as they adversely affect water quality.

The City's NICE program has funded pet waste stations throughout Port St. Lucie. Please take advantage of them when walking your pets!

When rain washes pet waste into swales or stormwater drains, pollutants are carried along to waterways. Pollutants found in pet waste can transmit diseases to humans. Pet waste also contains nutrients that encourage excess weed and algae growth. Be responsible and please pickup your pets waste and dispose of properly.

## Fertilizer

According to the City's fertilizer ordinance, no fertilizer containing nitrogen and/or phosphorus (phosphate) shall be applied to turf or landscape plants from June 1 to Sept. 30 each year. No application of fertilizer shall be made when a flood, tropical storm or hurricane watch or warning is forecast, or more than 2 inches of rain is expected.

During the non-restricted season Oct. 1 to May 31, nitrogen fertilizer must contain at least 50% slow-release nitrogen. Refer to the link below on how to determine slow release nitrogen content in fertilizer.

No fertilizer containing phosphorus (phosphate) shall be applied anytime during the year, unless a soil test showing a deficiency is taken. Contact UF-IFAS Extension office for further information on testing at 772-462-1660 or [www.cityofpsl.com/fertilizer](http://www.cityofpsl.com/fertilizer).

Do not apply fertilizer within 10 feet from the top of the bank of any water surface, landward edge of the top of a seawall or wetland.

Keep fertilizer off hard surfaces, ditches, conveyances or water bodies; if spilled, clean up immediately. Keep grass clippings and landscape debris from being deposited into storm drains, ditches, surface waters and roadways to reduce runoff pollution.

Violations of this ordinance and its requirements can result in monetary fines.



# Garbage & Recycling

The City of Port St. Lucie has a franchise agreement with Waste Pro of FL, Inc. to haul household garbage, recyclables, yard clippings and bulk items for customers in the City. The franchise agreement is managed by the city's Neighborhood Services Department. Contact Waste Pro directly regarding garbage, yard waste and recycling:

- Submit concerns online at [www.wasteprousa.com/city-of-port-st-lucie/](http://www.wasteprousa.com/city-of-port-st-lucie/)
- Call Waste Pro at 772-595-9390
- Text Waste Pro at 772-202-5150
- Garbage cans are not provided by Waste Pro. They must weigh less than 50 pounds each when filled.

## Yard Waste

Yard waste in all areas will be collected on scheduled pick-up days. Composting of yard waste is welcome, but not required.

## Top 6 Trash Tips

- Place containers at the curbside by 7 a.m. on regular collection days
- Garbage must be in a tied bag or covered can
- Do not mix garbage and yard waste—they must be in separate containers
- Cans should be no larger than 32 gallons and weigh no more than 50 pounds
- No auto parts, boat parts, or empty gasoline cans
- Learn how to be FOG (fats, oils, grease) free:
  - » Do not pour grease down the sink, garbage disposal, or into toilets.
  - » Do scrape grease and food scraps from cooking surfaces into the trash for disposal. Wipe excess FOG (fats, oils, grease) from pans and dishes with a paper towel and throw it away. Cool hot grease in a can and throw it away. Put baskets in sink drains to catch food scraps and other solids.

## Waste Pro Customer Service

772-873-6317

Waste Pro has an office in Port St. Lucie. Residents can call, text or visit with their Waste Pro representative at City Hall in the Neighborhood Services Department. Contact Waste Pro directly regarding garbage, yard waste, and recycling.



# Emergency Preparedness

772-871-7340 | [www.cityofpsl.com/em](http://www.cityofpsl.com/em)

The City of Port St. Lucie has an All-Hazards Emergency Preparedness Plan that is flexible to any kind of declared emergency.

## Hurricanes & Storms

Hurricane season runs June 1 through Nov. 30. Residents should prepare before the hurricane season begins.

## Hurricane Preparedness Expo

This premier storm preparation event brings together over 60 businesses and emergency service providers with information and products that can help keep you, your home and your loved ones prepared and safe through hurricane season. You'll also learn the latest news through presentations by Emergency Management experts and meteorologists.

## Additional Contacts

- American Red Cross 772-672-8800
- Federal Emergency Management Agency (FEMA) 800-621-3362

## Evacuations

- Evacuations are scheduled by County and City officials. If you are instructed to evacuate, have a plan.
- If you expect to evacuate your home in the event of a hurricane, plan where you will stay, how you will get there and what supplies you will take.
- If you need transportation to a public shelter because of a physical disability or a neurological or psychological disorder, register with the County Office of Emergency Management in advance. Do not wait until a storm approaches.
- If you or a family member receives home health care or depends on electrical life-support equipment, discuss emergency plans with your physician or agency representative and, if necessary, decide with a hospital or special needs shelter to stay there if you must evacuate.



# Community Redevelopment Agency

The City of Port St. Lucie is only 60 years young so one could wonder how any redevelopment is necessary. The City's development strategy in 1961 is the foundation for the need for varying levels of redevelopment. You can find out more information about the City's Community Redevelopment Areas (CRAs) and the progress in each of these areas by visiting [www.cityofpsl.com/CRA](http://www.cityofpsl.com/CRA).

## The future of Port St. Lucie's riverfront – The Port District Featuring:

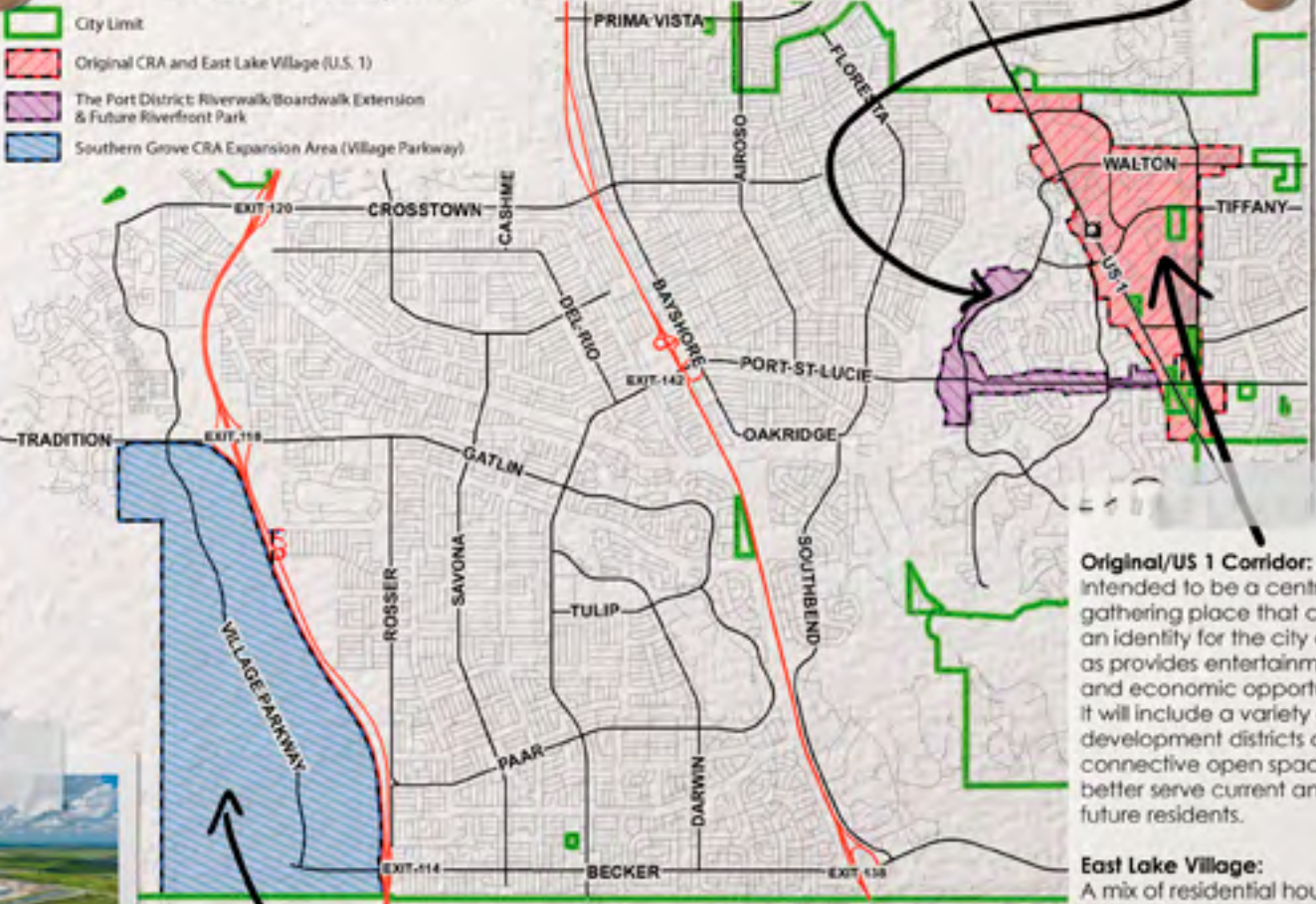
- Expanded Riverwalk Boardwalk
- Pioneer Park - a one-of-a-kind playground - experience for our youth
- Riverfront dining
- Historic Village
- Waterfront event lawn
- Botanical Gardens
- Veterans' Memorial Park



Learn more: [www.cityofpsl.com/theport](http://www.cityofpsl.com/theport)

Port St. Lucie Blvd./The Port; Will be a vibrant residential, entertainment and recreation area that protects and enhances existing neighborhoods.

## CRA Boundary Map - U.S. 1, The Port District, & Southern Grove



**Original/US 1 Corridor:** Intended to be a central gathering place that creates an identity for the city as well as provides entertainment and economic opportunities. It will include a variety of development districts and connective open space to better serve current and future residents.

**East Lake Village:** A mix of residential housing types within a neighborhood setting of pedestrian-friendly streets, public open spaces, neighborhood squares and a greenway trail system linking its residents to the rest of the CRA.

**About:** Southern Grove is also known as Port St. Lucie's "jobs corridor" and is home to Cleveland Clinic Tradition Hospital and the new Cleveland Clinic Florida Innovation and Research Center, Florida International University/Torrey Pines Institute for Molecular Studies, Oculus Surgical, Accel, Tamco and more.



TAMCO

Southern Grove will be a regional employment center and retail destination with a diverse economic base formed of innovation, an integral facet of its identity and fiscal stability. It will be a well-planned mixed-use community, aesthetically pleasing, interconnected, sensitive to the environment and unique.





— Port St. Lucie —  
**PARKS & RECREATION**

[www.pslparks.com](http://www.pslparks.com)

*It starts in parks!*



The City of Port St. Lucie Parks & Recreation Department offers a vast selection of leisure and fitness opportunities designed to improve the quality of life for all who call it home. Recently recognized on a national level by the National Recreation and Park Association for its Rock Steady Boxing program, the Department is home to over 40 park locations, three signature facilities, The Saints Golf Course, and offers access to activities such as camping, playgrounds, tennis, racquetball, pickleball, disc golf, pavilions, boating access, fishing areas and dog parks. At Port St. Lucie Parks & Recreation, we are committed to offering you the ability to “learn, grow and serve...everyday,” and we can’t wait to see you in our parks!

## Programs

View the many programs offered by the City of Port St. Lucie Parks & Recreation Department at [www.pslparks.com](http://www.pslparks.com) or *Leisure Time Magazine*.

## Special Events

[www.pslparks.com/events](http://www.pslparks.com/events)

- Martin Luther King Jr. Family Fun Day
- Daddy Daughter Valentine Dance
- Special Needs Valentine Dance
- Bonfire & Hayride
- St. Patrick's Day Festival
- Easter Bunny Visit
- Easter Breakfast
- Eggstravaganza
- Special Needs Spring Dance
- Memorial Day Service
- Freedomfest
- Haunted Happenings Dance
- Super Spooky Halloween Special Needs Dance
- River Nights
- Fall Fun Fest
- Oktoberfest
- Veterans Day Service
- Festival of Lights
- Winter Wonderland Light Show
- Holiday Special Needs Luncheon
- Santa Claus Visit
- Pancakes with Santa



### Port St. Lucie Community Center

**2195 SE Airoso Blvd., 772-878-2277**

The Community Center amenities include banquet hall with stage, meeting rooms, kitchen and fitness center. There are a variety of recreational programs and services at the Community Center.



### Humana Fitness & Wellness Center at MIDFLORIDA Event Center

**9221 SE Civic Center Place, 772-807-4499**

As part of the 100,000 square-foot MIDFLORIDA Event Center (formerly known as the Civic Center), the P&R Recreation and Fitness components of the facility offer the state-of-the-art Humana Fitness & Wellness Center, full-court gymnasium, game room, four indoor racquetball courts and so much more. Memberships available.



### Robert E. Minsky Gymnasium

**750 SW Darwin Blvd., 772-344-4142**

The Minsky Gym is located within Whispering Pines Park and offers a wide range of activities for people of all ages. The amenities include 8,000 square feet of indoor gymnasium and two full-sized volleyball courts, or one full-sized basketball court.





# The Saints Golf Course

The Saints offers great opportunities for men and women of all ages. The popular City Golf Championship is held in November each year for amateurs 16 years and older. A premier ladies' golf association plays here weekly. Junior golf programs for ages 7 to 17 are available throughout the year.

The Saints Golf Course is owned and operated by the City of Port St. Lucie. Located at 2601 S.E. Morningside Blvd. in a tranquil residential neighborhood, The Saints Golf Course consists of an exceptional 18-hole championship course, driving range and practice area. The Saints' clubhouse houses a fully-stocked pro shop and a restaurant, pub and rentable banquet room.

Our goal at the Saints is to provide you with a great golfing experience every time you tee the ball up. Our staff is dedicated, helpful and friendly. Please let us know how we can be of service. We hope you enjoy the game and our beautiful course.

**2601 SE Morningside Boulevard**  
**Port St. Lucie, FL 34953**  
**772-398-2901 | [www.saintspsl.com](http://www.saintspsl.com)**

## History

Designed and developed in 1961, The Saints, along with its sister course The Sinners, became known as the Port St. Lucie Country Club. Throughout the following few decades, between the two courses, sport and entertainment moguls enjoyed playing golf in Port St. Lucie. Among these famous icons to enjoy golf at the Club were Perry Como, Jerry Lewis, Margaret Trudeau, Joe DiMaggio and "The King of Cool" himself, Dean Martin. The course has played host to legendary golfers Jack Nicklaus, Lee Trevino, Sam Snead and Mickey Wright.



The City of Port St. Lucie purchased The Saint Golf Course in 2001, and since that time, the City has maintained the facility as a championship golf course. On several occasions, The Saints has been voted as the "Best Public Golf Course," by Hometown News. Since the original purchase of the course in 2001, the City has recognized The Saints as a true community asset and looks to continually evolve the facility as a premier destination for golfers of all ages. The Saints offers an 18-hole championship golf course, extensive practice area and excellent dining facilities.



### Botanical Gardens

**2410 SE Westmoreland Blvd., 772-337-1959**

*There is a \$5.00 per person suggested donation to help our Gardens grow. The Gardens is open 7-days a week. The Pavilion, Gift Shop and Garden Center are open Wed – Sat 10am to 4pm and Sun 12noon to 4pm. For more information go to PSLBG.org.*

A lush, tropical oasis awaits you at the Port St. Lucie Botanical Gardens. Visitors to this 21-acre urban haven will see a collection of 12 separate garden rooms containing more than 2,000 species of tropical and sub-tropical plants, including natives, palms, roses, cactus, bromeliads, bonsai, bamboo and much more. The gardens includes a Secret Garden, our Faerie Forrest and native wetlands and mangroves. Stroll along the lake, sit on inviting benches, and relax to the sound of water flowing from a nearby fountain. Take a moment to shop at our Garden Center or Gift Shop, or marvel at the wildlife, including Osprey, Great Blue Herons, Sandhill Cranes, Gopher Tortoises and more. The Garden is a spectacular site for your special event, wedding or meeting, with event sites nestled amid enchanting gardens, a peaceful lake, and native wetlands.

### Dog Parks

**Lyngate Park & Dog Park, 1301 SE Lyngate Drive**

**McChesney Park & Dog Park, 1585 SW Cashmere Blvd.**

**Woodland Trails Park & Dog Park, 1485 SW Calmar Ave.**

With acres to run and play, the off-leash dog parks are great spots for pups to exercise and socialize. Each dog park is securely fenced in and some of them include agility style equipment, a water fountain made just for dogs, doggie clean up bags, and a place for owners to lounge, such as benches and/or a pavilion.

*Not all dogs like to socialize. If your dog is timid or aggressive, leave them at home for their safety and enjoyment. All dogs must have a current license and be up to date on vaccinations.*

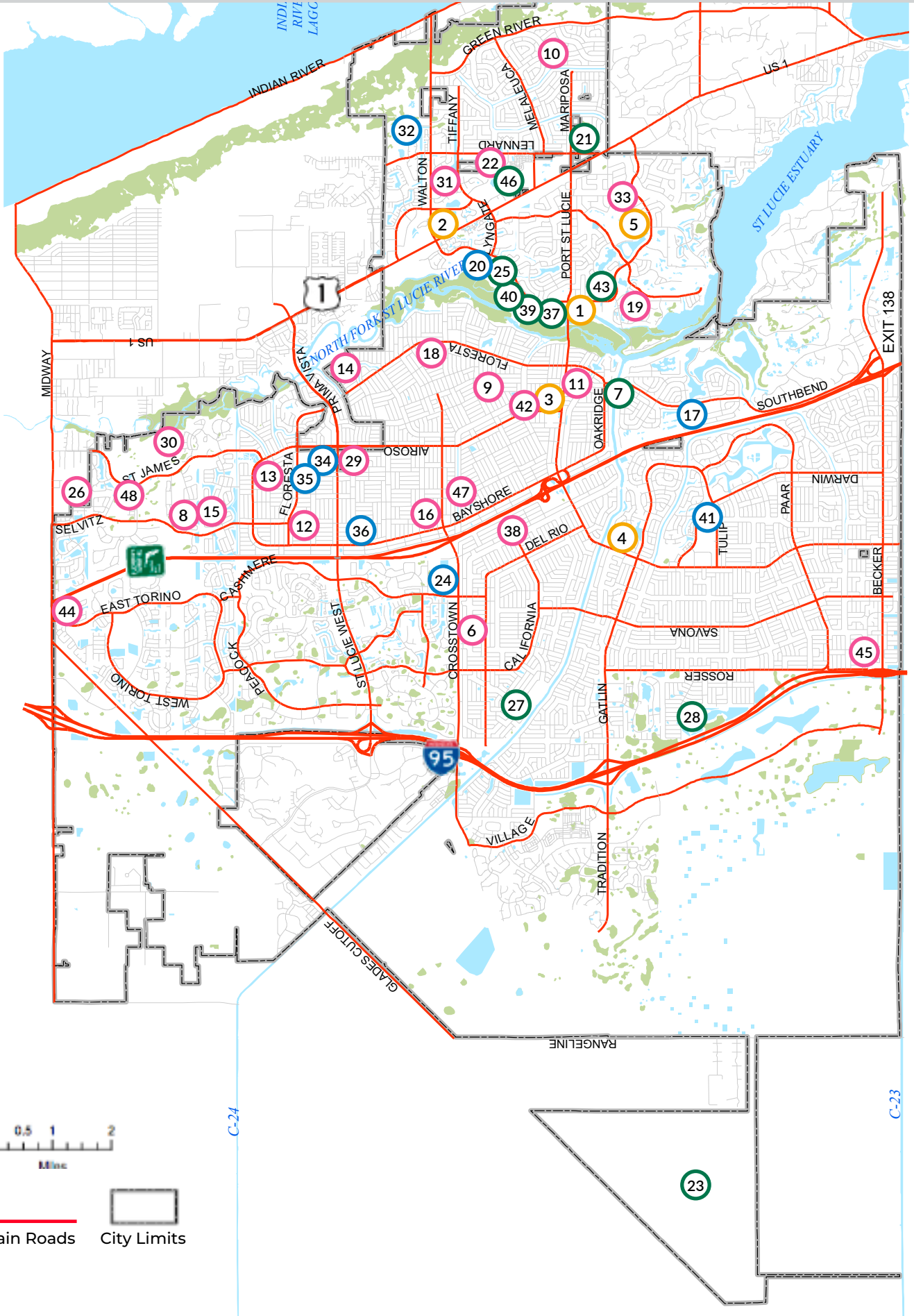
### Campsites: McCarty Ranch Preserve

**12525 Range Line Road, Port St. Lucie, 34987, 772-878-2277**

Port St. Lucie's McCarty Ranch Preserve is known for its excellent hiking, biking, kayaking, and fishing opportunities. Visitors can camp and stay in this primitive and rustic setting with 13 campsites and six RV trailer sites with boat and canoe launch, camping, disc golf, fishing permitted, nature trails and open space. Bathroom facilities with showers are available on site. There is no parking, water connections or electricity at the sites.









# Parks Map

1. **Botanical Gardens**, 2410 SE Westmoreland Blvd.  
772-337-1959
2. **MIDFLORIDA Event Center Recreation & Fitness**  
9221 SE Civic Center Pl. 772-807-4499
3. **Community Center/Parks & Recreation Main Office**  
2195 SE Airoso Blvd. • 772-878-2277
4. **Robert E. Minsky Gymnasium**, 750 SW Darwin Blvd.  
772-344-4142
5. **The Saints Golf Course**, 2601 SE Morningside Blvd.  
772-398-2901
6. **Apache Park**, 1449 SW Apache Ave.
7. **C-24 Canal Park**, 500 SE Oakridge Dr.
8. **Charles E. Ray Park**, 5626 NW Manville Dr.
9. **Doat Street Park**, 425 SE Doat St.
10. **Port St. Lucie Elks Lodge #2658/Friendship Park**,  
782264 SE West Blackwell Dr.
11. **Fred Cook Park**, 400 SE Glenwood Ave.
12. **Girl Scout Friendship Park**, 315 NW Heather St.
13. **Gulf Stream Park**, 210 NE Ardsley Dr.
14. **Harborview Park**, 624 SE Harborview Dr.
15. **Ian T. Zook Park**, 5600 NW Manville Dr.
16. **Jaycee Park**, 1301 SW Bayshore Blvd.
17. **Jessica Clinton Park**, 3200 SE Southbend Blvd.
18. **Kiwanis Park**, 1320 SE Floresta Dr.
19. **Loyalty Park**, 2810 SE Morningside Blvd.
20. **Lyngate Park & Dog Park**, 1301 SE Lyngate Dr.
21. **Mariposa Cane Slough Preserve**,  
2280 SE Mariposa Ave.
22. **Mary Ann Cernuto Park**, 2060 SE Grand Dr.
23. **McCarty Ranch Preserve**, 12525 Range Line Rd.
24. **McChesney Park**, 1585 SW Cashmere Blvd.
25. **Midport Lake**, 2010 SE Veterans Memorial Pkwy.
26. **Milner Drive Tot Lot**, 5160 NW Milner Dr.
27. **Oak Hammock Park**, 1982 SW Villanova Rd.
28. **O.L. Peacock Sr. Park**, 1950 SW Dreyfuss Blvd.
29. **Ravenswood Racquetball Courts**,  
400 SW Ravenswood Ln.
30. **River Place Park**, 690 NW Bayou Country Ln.
31. **Rotary Park**, 2101 SE Tiffany Ave.
32. **Sandhill Crane Park**, 2355 SE Scenic Park Dr.
33. **Sandpiper Bay Park**, 1878 SE Westmoreland Blvd.
34. **Sportsman's Park**, 201 NW Prima Vista Blvd.
35. **Sportsman's Park West**, 220 NW Irving St.
36. **Swan Park**, 700 SW Carmelite St.
37. **Tom Hooper Park**, 2340 SE Rivergate Pkwy.
38. **Turtle Run Park**, 1945 SW Cameo Blvd.
39. **Veterans Memorial Park**, 2100 SE Veterans Memorial  
Pkwy.
40. **Veterans Park at Rivergate**, 2200 SE Veterans  
Memorial Pkwy.
41. **Whispering Pines Park**, 800 SW Darwin Blvd.
42. **Whitmore Park**, 474 SE Whitmore Dr.
43. **Wilderness Park**, 2701 SE Westmoreland Blvd.
44. **Winterlakes Park**, 5241 NW Jannebo St.
45. **Woodland Trails Park**, 1485 SW Calmar Ave.
46. **Woodstork Trail**, 1957 SE Hillmoor Dr.

The City of Port St. Lucie has partnered with the St. Lucie Public Schools for public use of outdoor recreation areas during school days from 6 p.m. - sunset. and on weekends and non-school days 8 a.m. - sunset.

47. **Bayshore Elementary School**, 1661 SW Bayshore Blvd.
48. **Southern Oaks Middle School**, 5500 NW St. James Dr.



Facilities



Community  
Parks



Neighborhood  
Parks



Special Purpose  
Parks

Large parks staffed with Parks & Recreation employees with lighted athletic fields that play host to organized sports leagues.

Small parks that are not staffed and offer no lighted amenities but may offer practice fields, play courts, playgrounds, restrooms and picnic facilities.

Parks that are designed to host specific functions like boat ramps, conservation areas and preserves, botanical gardens, and memorial parks.



The MIDFLORIDA Credit Union Event Center is a premier, state-of-the-art special event facility with 100,000 square feet of indoor space. Along with two beautifully appointed ballrooms, the Event Center offers a large outdoor plaza and stage. The facilities are available for a wide variety of events and are home to many public gatherings and events throughout the year.

**Amenities**

Two grand ballrooms, outdoor plaza and stage, six-story parking garage, fitness center, art gallery, interactive fountain and boardwalk.

**Art Gallery**

The 2,000 square-foot gallery offers a professional venue to display local artwork. Four exhibits are displayed throughout the year, each opening with a reception, free for the public to attend.

**Catering**

The Event Center’s award-winning in-house food and beverage provider awaits the opportunity to exceed your expectations with its culinary expertise during your event.

**Interactive Fountain**

The fountain is a refreshing and fun activity for all residents to enjoy, especially on those hot summer days!

**9/11 Memorial**

The City’s 9/11 Memorial is located at the MIDFLORIDA Event Center Plaza. The memorial features an 11-foot section of metal girder from the fallen World Trade Center and is suspended above a fountain.

**MIDFLORIDA Credit Union Event Center**  
**9221 SE Civic Center Pl., Port St. Lucie, FL 34952**

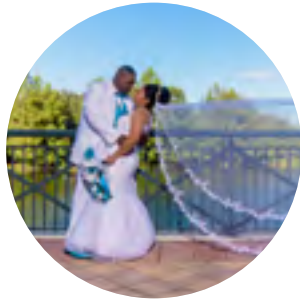
**772-807-4488 | MIDFLORIDAEventCenter.com**

**Monday-Friday, 8 a.m.-5 p.m.**





Conferences



Weddings



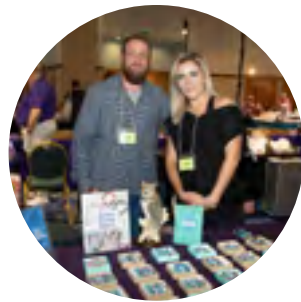
Receptions



Meetings



Live Entertainment



Trade Shows



Festivals



Fundraisers



Outdoor Concerts



Parties & Banquets



# Visitor Information

*Plan a Staycation!  
www.visitstlucie.com*

## Hotels



### **Best Western Port St. Lucie**

7900 US Highway 1  
Port St. Lucie, 34952  
772-878-7600

### **Club Med Sandpiper Bay**

4500 SE Pine Valley Street  
Port St. Lucie, 34952  
772-398-5100

### **Hampton Inn & Suites Port St. Lucie West**

155 SW Peacock Boulevard  
Port St. Lucie, 34986  
772-878-5900

### **Hilton Garden Inn at PGA Village/ Port St. Lucie**

8540 Commerce Centre Drive  
Port St. Lucie, 34986  
772-871-6850

### **Holiday Inn Express & Suites Port St. Lucie West**

1601 NW Courtyard Circle  
Port St. Lucie, 34986  
772-879-6565

### **Holiday Inn Port St. Lucie**

10120 S Federal Highway  
Port St. Lucie, 34952  
772-337-2200

### **Homewood Suites by Hilton Port St. Lucie – Tradition**

10301 SW Innovation Way  
Port St. Lucie, 34987  
772-345-5300

### **MainStay Suites at PGA Village**

8501 Champions Way  
Port St. Lucie, 34986  
772-460-8882

### **Residence Inn by Marriott Port St. Lucie**

1920 SW Fountainview Boulevard  
Port St. Lucie, 34986  
772-344-7814

### **Sheraton PGA Vacation Resort Port St. Lucie**

8702 Champions Way  
Port St. Lucie, 34986  
772-460-5700

### **Springhill Suites by Marriott Port St. Lucie**

2000 NW Courtyard Circle  
Port St. Lucie, 34986  
772-871-2929

### **Town Place Suites by Marriott**

10460 SW Village Parkway  
Port St. Lucie, 34987  
772-272-1026

Hospitals



**Cleveland Clinic Tradition Hospital**

10000 SW Innovation Way  
Port St. Lucie, 34987  
772-345-8100

**St. Lucie Medical Center**

1800 SE Tiffany Avenue  
Port St. Lucie, 34952  
772-335-4000

**Lawnwood Regional Medical Center**

1700 S 23rd Street  
Ft. Pierce, 34950  
772-461-4000

**St. Lucie County Airport**

3000 Curtis King Boulevard  
Ft. Pierce, 34946  
772-462-1732

**Palm Beach International Airport**

1000 James L. Turnage Boulevard  
West Palm Beach, 33415  
561-471-7400

**Orlando International Airport**

1 Jeff Fuqua Boulevard  
Orlando, 32827  
407-825-2001

**Fort Lauderdale International Airport**

100 Terminal Drive  
Fort Lauderdale, FL 33315  
954-359-1200



Airports



Transportations



**Council on Aging Community Transit**

772-465-5220

**Treasure Coast Connector**

772-464-8878  
SLCRide.org

**SLC Community On Demand MicroTransit**

772-464-7433(RIDE)  
SLCRide.org



**TREASURE COAST  
CONNECTOR**



[www.SLCride.com](http://www.SLCride.com)





# Schools and Libraries



## St. Lucie Public Schools

772-429-3600

The schools utilize an open-enrollment system where parents select from a variety of schools close to where they live. For a list of schools, including charter schools, visit <https://www.stlucie.k12.fl.us/>

## Libraries

### Morningside Branch

2410 SE Morningside Boulevard  
Port St. Lucie, 34952  
772-337-5632

### Port St. Lucie Branch

180 SW Prima Vista Boulevard  
Port St. Lucie, 34983  
772-871-5450

### Paula A. Lewis Branch

2950 SW Rosser Boulevard  
Port St. Lucie, 34952  
772-871-5470

### Pruitt Campus Library

500 NW California Boulevard  
Port St. Lucie, 34986  
772-336-6380

*This library is a joint-use facility of Indian River State College and St. Lucie County. Hours are reduced during summer and class breaks.*

## College/University

### Indian River State College

3209 Virginia Avenue  
Ft. Pierce, 34981  
772-462-4772

### University of Florida IFAS

8400 Picos Road  
Ft. Pierce, 34945  
772-462-1660

### Keiser University

9400 SW Discovery Way  
Port St. Lucie, 34987  
772-398-9990

### Florida International University/Torrey Pines Institute for Molecular Studies

11350 SW Village Parkway  
Port St. Lucie, 34987  
772-345-4800

There are eight libraries in St. Lucie County. You can find locations and contact information at [www.stlucieco.gov/departments-services/a-z/library](http://www.stlucieco.gov/departments-services/a-z/library).



# A to Z Listing for Services

- A
- B
- C
- D
- E
- F
- G
- H
- I
- J
- K
- L
- M
- N
- O
- P
- Q
- R
- S
- T
- U
- V
- W
- X
- Y
- Z

## **1PSL App**

**772-871-1775(1PSL)**

Contact 1PSL with the 1PSL App which allows residents to connect with the City either via mobile app, phone or web portal at [www.cityofpsl.com/1PSL](http://www.cityofpsl.com/1PSL)

## **Alarms**

**855-787-2699**

Alarm systems throughout St. Lucie County are required to be registered. You can apply online to Public Safety Corporation, also known as CryWolf Services. Registration is free.

## **Alert St. Lucie**

**772-462-8100**

Receive alerts about emergencies and important community news by signing up for the emergency alert program.

## **Animals**

**772-871-5042**

Dogs and cats over the age of six months must be licensed within 30 days of acquiring the pet, or when establishing residency within the City. A County license is not required.

## **Aquatics**

**772-871-2183**

Ravenswood Pool is in Port St. Lucie. Swim lessons provided by the American Red Cross are available at this facility.

## **Arts**

**772-871-5213**

Art is an integral part of the City. The City Council established the Public Art Advisory Board which presents a Public Art Master Plan for review and approval by City Council and recommends specific public art projects. The Board is comprised of seven members who serve on a voluntary basis.

## **Athletics**

**772-878-2277**

The City's expansive sports league program for kids and adults includes baseball, football, cheerleading, basketball, volleyball, tennis, T-ball, soccer and softball. Call for league sign-ups.

## **Baby Safe Sleep Program**

**772-462-3800**

See St. Lucie County Health Department.

## **Bicycles**

**772-871-5000**

You can register your bicycle with the Police Department online. The form is available on the City's website, [www.cityofpsl.com/police](http://www.cityofpsl.com/police).

## **A** **Bike Lanes & Paths** **772-871-5100**

Bike lanes and paths are available on certain roadways and should be used where provided. For use after dark, bicycles must have a white headlight and a red rear reflector. For bike lane path maintenance concerns, contact the Public Works Streets Division.

## **B** **C** **D** **Bike Share Program** **202-999-3924**

See <https://bike.zagster.com/stlucie/>

## **E** **F** **Block Parties** **772-871-5010**

All events held outside must apply for a special event permit. The permit is valid for two weeks and may be obtained two times per year.

## **G** **H** **I** **Boat Registration** **772-462-1650**

All motorized vessels operating on Florida's public waterways must be titled and registered. Contact the St. Lucie County Tax Collector to register.

## **J** **K** **Board & Committees** **772-871-5223**

Port St. Lucie is both involved with and appoints numerous boards and committees. Some of these boards are a great way to get involved with your community. Citizens serve on many of these boards and offer their expertise and input about larger programs. They even make recommendations to the City Commission. To find out more call the Office of Management and Budget.

## **L** **M** **N** **O** **Building Permits and Requirements** **772-871-5132**

A City-issued building permit is required for most general maintenance and repairs for any changes that deviate from original building plans. Permit types include security systems, garage alterations, replacement of air conditioning units, new pools or pool heaters, porches or decks, driveways and structural changes or modifications to electrical systems. The Building Department has a drive-thru window to pick up permits, drop off inspections, plan reviews and various paperwork.

## **P** **Q** **R** **S** **Bulk Waste** **772-595-9390**

Bulk items/appliances are picked up weekly. If there is a small amount of bulk, it will be removed with your garbage. If larger amount of bulk, a bulk clam truck will pick up on Thursdays.

## **T** **U** **Bus Transportation** **772-464-7433**

St. Lucie County coordinates free transportation with Treasure Coast Connector. Contact them for information, including routes and bus times. Visit [SLCRide.org](http://SLCRide.org). For more information about transportation visit page 31.

## **V** **W** **X** **Business Navigator** **772-873-6374**

Port St. Lucie's Business Navigator is available to serve as your guide throughout the development process and can provide you clarification on requirements for obtaining a business license, zoning approvals and building permits. [www.CityofPSL.com/BizNavigator](http://www.CityofPSL.com/BizNavigator).

## **Y** **Z**

**Business Tax** **772-344-4356**

The business tax is levied on all businesses located in the City of Port St. Lucie. Business training workshops are offered as a convenient way for companies and entrepreneurs to ask questions about common issues.

**Calendar of Events** **772-871-5225**

Please call or go to the City website to view all City-sponsored special events. [www.cityofpsl.com/events](http://www.cityofpsl.com/events)

**Camps** **772-878-2277**

Day camp is available during summer and when school is out. Children are supervised in a safe and secure environment. In addition, the children will be engaged daily in educational activities, recreation games and crafts that are often themed to the season. [www.pslparks.com/SummerCamp](http://www.pslparks.com/SummerCamp).

**Canal Maintenance** **772-871-5100**

Maintenance for the City-own canals is managed by the Public Works Department

**Car Seats** **772-462-3501**

The St. Lucie County Fire District provides free child safety seat checks. Appointments are needed. There are a limited number of car seats available for a donation.

**CareerSource Florida** **772-335-3030**

Located at 584 NW University Blvd., Suite 300, Port St. Lucie, 34986. The Career Center can work with you to search for jobs and provide education and training programs.

**Cars, abandoned** **772-871-5010**

For abandoned vehicles on the roadway, call the Police Department’s non-emergency line at 772-871-5000; for abandoned cars on private property, call Code Compliance at 772-871-5010.

**Chamber of Commerce** **772-595-9999**

The Chamber of Commerce unites businesses and professional people in our community. The mission is to help businesses prosper through advocacy, education and exposure.

**Charter School** **772-429-3600**

There are several Charter Schools in St. Lucie County. Please go online for information about schools.

**Citizen Services** **772-871-5010**

See Neighborhood Services or visit [www.cityofpsl.com/NSD](http://www.cityofpsl.com/NSD)

**Citizen Summit** **772-871-5219**

The Citizen Summit is held each year to hear the resident’s feedback about our City. The data and information collected is used to help the City Council update its Strategic Plan.

- A
- B
- C**
- D
- E
- F
- G
- H
- I
- J
- K
- L
- M
- N
- O
- P
- Q
- R
- S
- T
- U
- V
- W
- X
- Y
- Z



**A** **Citizen's Police Academy** **772-344-4052**

The Citizen's Police Academy is held each year in January and lasts eight weeks. The program offers City residents a view into the Police Departments through demonstrations, lectures and discussions.

**B**

**C** **City Council** **772-871-5159**

The City is led by a five-member elected Council, including the Mayor, which sets policy and determines the long-term vision for the City. To learn which Council district you live in, visit [www.cityofpsl.com/districts](http://www.cityofpsl.com/districts).

**D**

**E**

**F** **City Hall** **772-871-1775(1PSL)**

City Hall is located at 121 SW Port St. Lucie Boulevard. Open Monday through Friday from 8 a.m. to 5 p.m.

**G**

**H** **City Manager** **772-871-5163**

The City Manager handles the business affairs of the City and is appointed by the Mayor and City Council.

**I**

**J** **City TV, PSL-TV20** **772-871-5219**

PSL TV is available on AT&T UVerse (Channel 99), Comcast (Channel 20) and Blue Stream Fiber (Channel 20) featuring City news, live coverage and rebroadcasts of public meetings, events, and more.

**K**

**L**

**M** **City University** **772-871-7395**

City University is a free nine-week program designed to help residents learn about their City government. Participants will learn about City departments and how decisions are made.

**N**

**O**

**P** **Code Compliance** **772-871-5010**

Through education and enforcement, Code Compliance Officers facilitate voluntary compliance with City laws and code, empower community self-help and develop public outreach programs. See pages 13–15 for more information.

**Q**

**R** **Colleges**

See Schools in the Welcome Guide, page 32, for more information.

**S**

**T**

**U** **Commercial Vehicle Info** **772-871-5010**

Commercial vehicles are prohibited from being parked or stored in residential areas except while working at a job site. Examples of commercial vehicles: dump trucks, tow trucks or trucks with six wheels, step vans, chemical tank trucks, and any pickup or van openly storing equipment, materials or supplies.

**V**

**W** **Commissioners, St. Lucie County** **772-462-1100**

The St. Lucie Board of County Commissioners (BOCC) include five Commissioners in St. Lucie County.

**X**

**Y**

**Z**

## Communications

772-871-5219

Communications is highly involved with the promotion of City news and informing the public of news from and around the City. The City website, along with social media, is a large part of the communication. Sign up for City e-newsletters at [www.cityofpsl.com/newsletter](http://www.cityofpsl.com/newsletter).

## Community Helpline

211

A community helpline and crisis hotline that provides suicide prevention, crisis intervention, information, assessment, and referral to community services for people of all ages.

## Community Transit Bus Service

772-879-1287

There are several fixed routes for public bus services throughout St. Lucie County and surrounding counties. In addition, there is an on-demand service for eligible disadvantaged individuals and seniors.

## Community Development

772-871-5010

See Neighborhood Services for Neighborhood Improvement & Community Engagement (NICE).

## Community Emergency Response Team (CERT)

772-871-7340

The Community Emergency Response Team conducts readiness exercises several times a year to practice and retain citizen emergency response capabilities. You can find out ways to volunteer by contacting them.

## Crime Prevention Unit

772-871-5027

See Partners Against Crime in the A to Z Listings for Services.

## Community Redevelopment Agency (CRA)

772-871-7386

The Community Redevelopment Agency was created in 2001. There are four CRA areas in the City. The strategy is to create a central business district and a series of mixed-use districts.

## Congressional Delegation

Florida's Congressional Delegation includes two state senators and four local congressmen. Also see Legislative Delegation.

## CPR / First Aid Training

772-672-8800

Contact the local chapter of the American Red Cross for CPR, first aid training and other classes in Port St. Lucie.

## Crime Prevention

772-871-5027

There is a variety of information available on ways to prevent crime from the Port St. Lucie Police Department Crime Prevention Unit. The Police Department will check your home with a free security check by a trained crime prevention specialist.

A  
B  
C  
D  
E  
F  
G  
H  
I  
J  
K  
L  
M  
N  
O  
P  
Q  
R  
S  
T  
U  
V  
W  
X  
Y  
Z

## **A Digging – Call Before You Dig 811**

Get underground utility lines marked for free before you dig on your property by calling 811. Call at least two days before you dig to get the process started and save you and your neighbors from a possible utility outage.

## **B**

## **C Disc Golf 772-878-2277**

There is an 18-hole disc golf course at McCarty Ranch Preserve and a nine-hole disc golf course at Rotary Park. Both are open to the public on a first-come, first-served basis. You must provide your own discs.

## **D**

## **E**

## **F Dog-Friendly Beach 772-462-1522**

The closest dog-friendly beach is located at Walton Rocks Beach/Dog Park at 6700 S Ocean Drive, Jensen Beach, FL 34957.

## **G**

## **H**

## **I Dog Parks 772-878-2277**

There are four dog parks including Lyngate Park, McChesney Park, Woodland Trails Park and Winterlakes Parks (coming late summer 2020). There are several more parks in the City that are on leash dog friendly. Contact Parks and Recreation for additional information.

## **J**

## **K**

## **L Drains, Stormwater 772-871-5100**

For problems or assistance with storm drains, contact the Public Works Department.

## **M**

## **N Dumping 772-871-5010**

Dumping of trash, debris, construction materials, grass or tree clippings, or other items anywhere within the City is strictly prohibited.

## **O**

## **P**

## **Q E-Newsletters 772-871-5219**

You can sign up for the City Electronic Newsletters (e-newsletters) on the City website:

- PSL Mail
- Building Buzz
- MIDFLORIDA Event Center
- Direct Connect with Mayor Oravec
- District 1 Newsletter
- District 3 Report
- Keep Port St. Lucie Beautiful Newsletter
- Parks & Recreation Newsletter
- The Saints Golf Course Newsletter
- Utility Systems Customer Newsletter

## **R**

## **S**

## **T**

## **U**

## **V**

## **W Economic Development Office (EDC) 772-336-6250**

The EDC works to promote the retention and expansion of existing businesses, as well as attracting new ones to St. Lucie County.

**X**

**Y**

**Z**



**Education**

**772-429-3600**

See Schools and Charter Schools on page 32.

**Elderly Program**

**772-336-8608**

The Council on Aging of St. Lucie is a non-profit organization providing services to seniors and assistance to improve their way of life. There are a variety of programs and activities offered for seniors.

**Elections, Municipal**

**772-871-5159**

The Mayor and City Council members serve four-year staggered terms. The Council members must live in the district they represent, however, residents throughout the City vote for every City Council seat. The Mayor is elected at-large in a citywide election and can live anywhere in the City. All voters can vote in the mayoral election.

**Emergency Management**

**772-871-7340**

Emergency Management coordinates the City’s mitigation, preparedness, response and recovery efforts along with maintaining the City’s Emergency Operations Center. See Emergency Management Preparedness on page 21.

**Emergency Phone Numbers (Police, Fire, EMS Dispatch)**

**911**

Call 911 for emergency services.

**Employment**

**772-871-5225**

A current list of job openings within the City of Port St. Lucie is available online at [www.cityofpsl.com/careers](http://www.cityofpsl.com/careers) and at City Hall.

**Fences**

**772-871-5010**

Fences shall be maintained structurally sound and in good repair per Code Compliance.

**Fingerprinting**

**772-871-5000**

Fingerprinting is available at the City Police Department for a small fee. Call or go online for hours available.

**Fire Department**

**772-621-3400**

The St. Lucie County Fire District has 17 fire stations throughout St. Lucie County with many of the fire stations located in Port St. Lucie.

**Fire Explorers**

**772-216-8165**

The Fire Explorers allows youths to gain insight into a variety of programs that offer hands-on career activities. Explorers learn first-hand by working side-by-side with actual firefighters.

- A
- B
- C
- D
- E
- F
- G
- H
- I
- J
- K
- L
- M
- N
- O
- P
- Q
- R
- S
- T
- U
- V
- W
- X
- Y
- Z

A

**Fire Extinguisher Disposal**

**772-462-1768**

Fire extinguishers are hazardous waste. Do not dispose with regular trash. Fire extinguishers can be taken to the St. Lucie County Waste Baling and Recycling Facility at 6120 Glades Cut Off Road, Fort Pierce.

B

C

**First Call for Help**

See Community Helpline in the A to Z listings for services.

D

E

F

**Fitness Center**

**772-878-2277**

There are two City facilities with a fitness center for use with a membership, the Community Fitness & Wellness Center at 2195 SE Airoso Blvd. and the MIDFLORIDA Event Center, Humana Fitness & Wellness Center at 9221 SE Civic Center Place. There are also free outdoor fitness stations for those who like to work out outside. There are fitness stations along Crosstown Parkway, Floresta Drive, Jessica Clinton Park, Woodland Trails Park, and Midport Lake.

G

H

I

**Flood Zones**

**772-871-5177**

To check your flood zone or for any questions about you flood zone, go online to <https://gis.cityofpsl.com/webapp/pw/floodzones/floodzones.html> for additional information.

J

K

L

**Found Property**

**772-871-5000**

If the value of found property is \$100 or less, notice shall be given by posting a description of the property at the law enforcement agency where the property was turned in. The notice must be posted for not less than two consecutive weeks in a designated public place.

M

N

O

**Forum on Race Relations and Inclusion (FRI)**

**772-871-5219**

The Forum’s mission is to bring the people of Port St. Lucie together to listen, share concerns, learn, plan, act and report on progress in maintaining and enhancing our promise of being a City of all ages.

P

Q

R

**Gang Prevention**

**772-871-5000**

It is the policy of the Port St. Lucie Police Department to reduce gang activity by proactive enforcement and intervention by the members of the department.

S

T

**Garage Sales**

**772-871-5010**

Residents can submit a garage sale form to advertise on the City website free of charge. For proper placement of garage sale signs, please visit the City website. The City will remove signs that are improperly placed.

U

V

W

**Garbage and Recycling**

**772-595-9390**

See garbage and recycling on page 20.

X

Y

**Golf - The Saints Golf Course**

**772-398-2901**

See page 24.

Z

**Go-Peds**

See Motor scooter in the A to Z listings for services.

**Graffiti**

**911**

Contact the Police Department to report graffiti. The Police Department will investigate graffiti and attempt to locate the person responsible.

**Gymnasium**

**772-878-2277**

There are several facilities in the City with gyms and exercise equipment including Minsky Gym, Community Center and the MIDFLORIDA Event Center. Contact Parks & Recreation for additional information.

**Handicapped Parking**

**772-871-5000**

It is unlawful to park a vehicle with any parking space designated for handicapped persons.

**Hazardous Waste Disposal**

**772-871-7000**

Household hazardous waste includes pesticides, insecticides, chemicals, gasoline, paint, lead, acid batteries, motor oil and electronics. The City has a drop off event biannually at the Public Works Facility. You may also take these items to the Solid Waste Baling and Recycling Facility. See Garbage and Waste on page 20.

**Historical Society, Port St. Lucie**

**772-462-1795**

The Historical Society works to preserve the history of Port St. Lucie. Go to <http://www.pslhistory.org/home.html> for more information.

**Home Occupations or Businesses**

**772-344-4356**

Home businesses are generally permitted for business offices or home daycares. The business is required to register with the City of Port St. Lucie.

**Home Security Check**

**772-871-5027**

The City of Port St. Lucie Police Department will provide a free security check of your home upon request. The security survey will be done by a trained crime prevention specialist and will include information on how best to keep your home safe.

**Hospitals**

See Visitor Information for a list of hospitals on page 31.

**House Watch**

**772-871-5000**

You can request to include your home on the Close House Watch List. The Police Department will make periodic checks of your property.

A  
B  
C  
D  
E  
F  
G  
H  
I  
J  
K  
L  
M  
N  
O  
P  
Q  
R  
S  
T  
U  
V  
W  
X  
Y  
Z



A  
B  
C  
D  
E  
F  
G  
H  
I  
J  
K  
L  
M  
N  
O  
P  
Q  
R  
S  
T  
U  
V  
W  
X  
Y  
Z

**Housing Programs** **772-871-7395**

---

The City works year-round to leverage funding for City projects and neighborhood programs through grants. The City receives federal and state grant funds to address housing and community development projects.

**Hurricane Disasters and Preparedness** **772-871-7340**

---

See Emergency Preparedness Pages 10 to 12.

**Immunizations** **772-462-3800**

---

Florida schools require children to have certain immunizations. Contact the Florida Dept. of Health for additional information.

**Indian River State College (IRSC)** **772-462-4772**

---

This college offers programs leading to various degrees as well as career training programs.

**Jobs, City of Port St. Lucie** **772-871-5225**

---

The City of Port St. Lucie has earned the Best Place to Work from the St. Lucie County Human Resource Association for numerous years for providing a first-class work environment for City employees. [www.cityofpsl.com/careers](http://www.cityofpsl.com/careers).

**Juvenile Offender Programs** **772-871-5000**

---

The Police Department’s Juvenile Restorative Justice Initiative is a pre-arrest diversion program which allows law enforcement to hold juvenile misdemeanors accountable for their crimes without involving the State Attorney’s Office or Circuit Court.

**Keep Port St. Lucie Beautiful** **772-871-5103**

---

KPSLB is a program housed within the Public Works Department. KPSLB’s mission of “engaging individuals to take greater responsibility for improving their community environments” pertains specifically to litter prevention, improving recycling and beautification. Help keep the City clean by volunteering in the Adopt-a-Street Program and conduct cleanups.

**Lawn Care** **772-871-5010**

---

Code Enforcement Grass cannot exceed 12 inches high on all improved property. See page 16.

**Legislative Affairs, St. Lucie County** **772-462-6426**

---

Legislative Affairs provides coordination to ensure that St. Lucie County receives resources and support to best serve its citizens.

**Library** **772-337-5669**

---

See list of Libraries on page 32.

**Lifeguard Training**

**772-871-2183**

Water Safety Instructor Classes and American Red Cross classes are offered periodically. Call for additional information.

**Litter Hotline**

**772-871-7000**

The City’s litter hotline allows citizens to report conditions such as commercial or residential litter, illegal dumping, debris in a canal and general litter in Port St. Lucie.

**Magazine – Leisure Time**

**772-878-2277**

Leisure Time is a bi-annual catalog of events, programs, and classes hosted by the Parks & Recreation Department. This is a free magazine that can be found at any of the City’s facilities.

**Medians**

**772-871-5100**

The Public Works Department maintains and mows the road right-of-way canals, medians and drainage right-of-way areas in the City.

**Meeting Rooms**

**772-878-2277**

There are a variety of meeting rooms available at the City Community Center and the MIDFLORIDA Event Center.

**Memorial Tree Remembrance**

**772-337-1959**

The Port St. Lucie Botanical Gardens has a special way to create a remembrance in honor by planting a tree for Arbor Day. The tree will be planted at the Botanical Gardens.

**Motor Scooter, Go-Peds**

**772-871-5000**

It is unlawful to operate a motor scooter on any roadway in Florida, unless the operator has a valid drivers license.

**Mosquito Control**

**772-462-1692**

The mission of the Mosquito Control District is to control mosquitoes and other insects using a combination of management approaches.

**Mowing & Landscape Maintenance**

**772-871-5100**

Mowing and maintaining all road right-of-way canals and drainage right-of-way within the City are maintained by the Public Works Environmental Services Division.

**Museums**

See Things to Do listed on pages 42 to 43.

A  
B  
C  
D  
E  
F  
G  
H  
I  
J  
K  
L  
M  
N  
O  
P  
Q  
R  
S  
T  
U  
V  
W  
X  
Y  
Z

<b>A</b>	<b>Nature Center St. Lucie County</b>	<b>772-785-5833</b>
<b>B</b>	The Oxbow Eco-Center is a preserve on the North Fork of the St. Lucie River. There are boardwalks, pedestrian trails and observation towers allowing visitors to fully experience nature without disturbing it. Trails are open from sunrise to sunset.	
<b>C</b>		
<b>D</b>	<b>Nature Programs</b>	<b>772-462-2536</b>
<b>E</b>	St. Lucie County Environmental Resources Department offers hike programs and other nature programs.	
<b>F</b>		
<b>G</b>	<b>Neighborhood Improvement &amp; Community Engagement (NICE)</b>	<b>772-871-5010</b>
<b>H</b>	The NICE program is administered by the Neighborhood Services Department. NICE focuses on improving the community neighborhood by neighborhood. The Citizens envision, plan and help create a master plan by defining the boundaries and identifying future improvements. Find out which neighborhood you live in on page 21.	
<b>I</b>		
<b>J</b>	<b>Neighborhood Services</b>	<b>772-871-5010</b>
<b>K</b>	The Department focuses services on helping residents maintain a high quality of life in the City's neighborhoods.	
<b>L</b>		
<b>M</b>	<b>Neighborhood Watch</b>	<b>772-871-5000</b>
	Contact the Police Crime Prevention Unit to start or join a Neighborhood Watch group in your area.	
<b>N</b>	<b>Noise Permits</b>	<b>772-871-5000</b>
<b>O</b>	A noise permit is required if you are having a gathering or some outside activity in which noise will be a factor, including a band, DJ, etc. Contact the Police Department's non-emergency line for more information.	
<b>P</b>	<b>Notary Service</b>	<b>772-871-5000</b>
<b>Q</b>	Notary service is available at the Police Department for a charge of \$10.	
<b>R</b>		
<b>S</b>	<b>Occupational Licenses</b>	
<b>T</b>	See Business Tax Office.	
<b>U</b>	<b>Open Houses</b>	<b>772-871-5010</b>
<b>V</b>	The City website has a place to promote your open house. The map webpage is provided with a list of upcoming open houses.	
<b>W</b>		
<b>X</b>	<b>Parking Tickets</b>	<b>772-871-5000</b>
<b>Y</b>	The Police Department only accepts cash or money orders. Code Compliance accepts payments in the form of cash, check, money order or debit/credit.	
<b>Z</b>		



**Parking Restrictions**

**772-871-5010**

The most common parking violations include: front yard parking, parking on the road and/or parking too close to the roadway, parking against the flow of traffic, vertically parking in the swale and parking on the swale without owner’s consent.

**Parks and Recreation**

**772-878-2277**

The City has over 40 parks and recreation facilities that offer a wide variety of leisure activities for residents and visitors of all ages.

**Partners Against Crime**

**772-871-5100**

Partners Against Crime is a program offered by the Port St. Lucie Police Department that focuses on strengthening partnerships between the community and police department through increased communication and interactions with local businesses.

**Passports**

**772-462-3207**

You may apply for a passport at the St. Lucie County Clerk’s Office in Port St. Lucie at 250 NW Country Club Drive, Port St. Lucie, and the U.S. Post Office, 5000 W. Midway Road, Fort Pierce.

**Permits**

**772-871-5132**

Permits for building additions and home improvements can be obtained from the Building Department. Permits for driveways are obtained in the Public Works Department.

**Pet Shelter**

**772-871-5042**

There is a temporary animal shelter at 2700 Industrial Ave. 3, Fort Pierce, 34946. The City keeps all domestic animals for five days. Afterwards, the animals are transferred to the St. Lucie County Temporary Shelter.

**Pets**

See animals in the A to Z Listings for Services.

**Pickleball**

**772-878-2277**

Whispering Pines Park offers eight lighted outdoor pickleball courts for your enjoyment that can be utilized during the day or nighttime, at no cost. The lighted courts are located at the Tennis Center.

**Picnic and Pavilion Rentals**

**772-878-2277**

Contact Parks and Recreation for a list of available pavilions.

**Planning**

See Zoning in the A to Z Listings for services.

- A
- B
- C
- D
- E
- F
- G
- H
- I
- J
- K
- L
- M
- N
- O
- P**
- Q
- R
- S
- T
- U
- V
- W
- X
- Y
- Z

<b>A</b>	<b>Poison Control</b>	<b>911 or 800-222-1222</b>
<b>B</b>	If you suspect someone may have ingested poison, call 911. The number for the Poison Control Center is 800-222-1222.	
<b>C</b>	<b>Police Athletic League</b>	<b>772-398-9436</b>
<b>D</b>	Working with the Police Department, the Police Athletic League (PAL) with the motto, "Filling Parks, Not Prisons," has a variety of activities for youths ages 8 to 18.	
<b>E</b>		
<b>F</b>	<b>Police Department</b>	<b>911 or 772-871-5000</b>
<b>G</b>	Treasure Coast Crime Stoppers 800-273-8477, Professional Standards Division 772-871-5106, Crime Prevention 772-871-5027, Traffic Accident Reports 772-871-5047, Police Athletic League 772-398-9436, Victim Assistance 772-344-4331, Volunteering 772-344-4052.	
<b>H</b>		
<b>I</b>	<b>Police Explorers</b>	<b>772-871-5000</b>
<b>J</b>	The Port St. Lucie Police Explorers give young adults a close look at the criminal justice field. The program provides an opportunity for them to experience how a department functions and what it takes for a career in law enforcement.	
<b>K</b>		
<b>L</b>	<b>Police Report Pick Up</b>	<b>772-871-5047</b>
<b>M</b>	Traffic Accident reports can be obtained by either calling or submitting a public-records request online.	
<b>N</b>	<b>Police, Off Duty Service</b>	<b>772-871-5000</b>
<b>O</b>	Residents can hire police officers for off-shift security or traffic details. Call the Special Detail Office for a permit and the current fees.	
<b>P</b>	<b>Pools, St. Lucie County</b>	<b>772-871-2183</b>
<b>Q</b>	Ravenswood Pool is located at 400 SW Ravenswood Lane in Port St. Lucie.	
<b>R</b>		
<b>S</b>	<b>Post Office</b>	<b>800-275-8777</b>
<b>T</b>	There are two Post Office locations in Port St. Lucie: 2255 SE Veterans Memorial Parkway, 34952, and 290 NW Peacock Road, 34986.	
<b>U</b>	<b>Property Appraiser</b>	<b>772-462-1000</b>
<b>V</b>	The St. Lucie County Property Appraiser is responsible for placing a fair, equitable and just value on all real and tangible personal property in St. Lucie County.	
<b>W</b>		
<b>X</b>	<b>Public Art – Port St. Lucie Arts League</b>	<b>772-871-5213</b>
<b>Y</b>	The mission of the league is to advance, enhance and sustain our community's cultural and artistic viability. They develop cultural awareness and provide community access to the arts.	
<b>Z</b>		

**Public Works**

**772-871-5100**

The Public Works Department oversees City resources that manage the planning, design, construction and maintenance of City infrastructure and various facilities. This includes roads and bridges, water quality and drainage, traffic operations and landscaping.

**Racquetball**

**772-878-2277**

There are four indoor racquetball courts at the MIDFLORIDA Event Center. Racquets and racquetball are available for rent. Prices vary.

**Recycling Collection**

**772-595-9390**

See Garbage and Waste on pages 16 to 17.

**Rentals**

For Meeting Rooms, see Meeting Rooms. Parks or picnic and pavilion rentals are available to rent throughout various locations in the City. River Walk Recreation Area 772-871-7386. The area is still in the works and will be a vibrant residential, entertainment and recreation area that protects and enhances existing neighborhoods.

**Safe Place**

**772-462-3800**

Project Safe Place is a place where a young person can go to request assistance. The yellow and black signs displayed indicate the business part of the network of safe places. The individual will then be taken to a shelter for counseling.

**Safety House**

**772-621-3400**

The Safety House is a mobile classroom setting designed to demonstrate how to safely escape, how to properly maintain smoke alarms and the importance of making a fire escape plan. The St. Lucie County Fire District’s Safety House is available to visit schools throughout St. Lucie County.

**Schools**

**772-429-3600**

St. Lucie County School’s mission is to ensure all students graduate from safe and caring schools, equipped with the knowledge, skills and a desire to succeed. Please go to the website for a list of schools. [www.stlucie.k12.fl.us/](http://www.stlucie.k12.fl.us/)

**Senior Center and Programs**

**772-336-8608**

The Council on Aging is a place to meet, to learn, get help and support and to have fun. It provides needed services and helps coordinate these services with appropriated community support agencies. State case managers provide ongoing guidance to seniors in need. Services include home services, nutrition, adult day care, personal care, respite care, recreation, social activities and transportation.

**Senior Ride Bus Service**

See Bus Transportation in the A to Listing for Services.

A  
B  
C  
D  
E  
F  
G  
H  
I  
J  
K  
L  
M  
N  
O  
P  
Q  
R  
S  
T  
U  
V  
W  
X  
Y  
Z



<b>A</b>	<b>Seniors, Safeguard</b>	<b>772-871-5303</b>
	<p>Participants in the Safeguard Our Seniors program will complete a questionnaire with their information. The information is then kept on file at the 911 center. Upon receipt of the questionnaire, a volunteer will deliver and affix your decal to your front door.</p>	
<b>B</b>		
<b>C</b>	<b>September 11th Memorial</b>	<b>772-807-4488</b>
	<p>The City's 9/11 Memorial is located at the MIDFLORIDA Event Center. The memorial features an actual 11-foot section of metal girder from the fallen World Trade Center and suspended above a fountain.</p>	
<b>D</b>		
<b>E</b>		
<b>F</b>	<b>Signs</b>	<b>772-871-5132</b>
	<p>Most signs require a sign permit. The sign permit is issued through the Building Department.</p>	
<b>G</b>		
<b>H</b>	<b>Skate Park</b>	<b>772-462-1523</b>
	<p>The 15,000 square-foot concrete facility includes challenging obstacles and a snake run. 2100 Virginia Ave, Fort Pierce, FL 34950.</p>	
<b>I</b>		
<b>J</b>		
<b>K</b>	<b>Social Security Office</b>	<b>800-772-1213</b>
	<p>The local office is at 6810 US Highway 1, Port St. Lucie 34952.</p>	
<b>L</b>		
<b>M</b>	<b>Solicitation, Door-to-Door</b>	<b>772-871-5000</b>
	<p>Anyone who canvasses, goes door-to-door for sales, or operates a mobile food wagon is required to obtain a solicitor permit from the Port St. Lucie Police Department. In some cases, an occupational license may also be required in addition to a solicitor permit.</p>	
<b>N</b>		
<b>O</b>		
<b>P</b>	<b>Special Events</b>	<b>772-878-2277</b>
	<p>The City of Port St. Lucie offers a variety of special events throughout the year including a Freedomfest, Fall Fun Fest and Festival of Lights and many others.</p>	
<b>Q</b>		
<b>R</b>		
<b>S</b>	<b>Special Needs Shelter</b>	<b>772-462-8100</b>
	<p>The St. Lucie County Special Needs Shelter is for individuals who seek shelter from a disaster and need medical assistance. The shelter is at the Havert L. Fenn Center, 2000 Virginia Avenue, Ft. Pierce, 34982.</p>	
<b>T</b>		
<b>U</b>	<b>Sports Leagues</b>	<b>772-344-4142</b>
	<p>The Parks &amp; Recreation Department is proud of its commitment to providing many opportunities for participation in sports leagues. The leagues encourage and teach good sportsmanship and enhance the well-being of children and adults, while in a fun and safe environment. <a href="http://www.pslparks.com/Leagues">www.pslparks.com/Leagues</a>.</p>	
<b>V</b>		
<b>W</b>		
<b>X</b>	<b>St. Lucie County Board of County Commissioners</b>	<b>772-462-1100</b>
	<p>St. Lucie County is comprised of the City of Port St. Lucie, City of Fort Pierce (county seat) and St. Lucie Village. As of 2018, St. Lucie County has a population of roughly 313,000. St. Lucie County is 572 square miles and has 21 miles of coastline.</p>	
<b>Y</b>		
<b>Z</b>		

**St. Lucie County Alerts Notifications**

[www.stlucieco.gov/alert](http://www.stlucieco.gov/alert)

Get alerts for emergencies and other important community news by signing up for the Emergency Alert Program. This system enables us to provide you with critical information quickly in a variety of situations, such as severe weather, unexpected road closures, missing persons and evacuations of buildings or neighborhoods.

**St. Lucie Mets**

772-871-2132

Clover Park is the spring training home of the New York Mets, summer home of the St. Lucie Mets and the hub for all New York Mets minor league operations.

**Street Lights, Florida Power & Light**

772-871-5157

Contact FPL to report a street light that is out or malfunctioning. To request the installation of street lights on a public residential street in the City to create a Street Lighting Boundary Area, the owner of a property on the street must submit a request by contacting the Clerk’s Office.

**Street Repairs**

772-871-5100

Roadways are maintained by the Public Works Streets Division. Responsibilities include street paving, pothole repair and street sweeping.

**Substance Abuse**

772-468-3909

New Horizons offers patient mental health care for adults and children. There are a variety of programs, counseling and outreach.

**Sunshine Kitchen**

772-247-2800

The Sunshine Kitchen is a state-of-the-art food incubator where chefs, caterers, food truck operators and more can hone their culinary skills. The facility provides access for people to produce and market food business items.

**Swim Lessons**

772-871-2183

St. Lucie County and the American Red Cross Learn-To-Swim program. They are offered throughout the summer.

**Tennis Lessons**

772-871-7670

Tennis lessons are available at Whispering Pines Park. There are various classes for different levels of experience.

**Tourism**

800-344-8443

The St. Lucie County’s Tourism Division is to improve the economy through activities, special events, marketing and expanding tourism as a year-round destination.

**Traffic Accident Report**

772-871-5047

After an accident, you can obtain a report from the Port St. Lucie Police Department.

A  
B  
C  
D  
E  
F  
G  
H  
I  
J  
K  
L  
M  
N  
O  
P  
Q  
R  
S  
T  
U  
V  
W  
X  
Y  
Z

A  
B  
C  
D  
E  
F  
G  
H  
I  
J  
K  
L  
M  
N  
O  
P  
Q  
R  
S  
T  
U  
V  
W  
X  
Y  
Z

---

**Transportation**

See Bus Transportation in the A to Z Listings for Services.

---

**Trash Collection**

See Trash and Garbage on page 20.

---

**Trees**

**772-871-5103**

The City of Port St. Lucie is a Tree City USA for its commitment to maintain trees and in keeping the City green and beautiful. The City Council has challenged the residents by asking all residents to plant a tree.

---

**Unemployment**

**866-482-4473**

CareerSource Research Coast provides extensive employment and training programs and services for local job seekers and employers.

---

**Vacant Lots**

**772-871-5010**

The owner of unimproved City property who creates, suffers or permits encroachment upon a developed lot shall be responsible for abating the nuisance.

---

**Vacation Watch**

**772-871-5000**

See House Watch in the A to Z Listings for Services.

---

**Vehicle Information Check**

Please go to <https://services.flhsmv.gov/MVCheckWeb/>

---

**Vehicle Registration**

**772-462-1650**

Go to St. Lucie County Tax Collector’s Office to register or renew your driver’s license.

---

**Veteran’s Memorial Park**

**772-878-2277**

There are memorials to various branches of the military in this park.

---

**Veterans Programs**

**772-337-5670**

The Veteran’s Service Division assists St. Lucie County veterans and their families with various services and information about benefits.

---

**Volunteer Services**

**772-812-4858**

Join the City’s growing ranks of volunteers who are helping to make contributions to our great City every day. There are a wide variety of opportunities. Please find out how you can make a difference.



**Voter Registration**

**772-871-5410**

Contact the St. Lucie County Supervisor of Elections to register and for voting locations. There are three locations in Port St. Lucie to register. Visit [SLCElections.com](http://SLCElections.com).

**Waste Landfill**

**772-462-1768**

Residents of St. Lucie County may bring acceptable Household Hazardous Waste to the Solid Waste Baling & Recycling Facility for proper disposal free of charge. 6120 Glades Cut Off Rd, Fort Pierce.

**Waste Pro**

**772-595-9390**

Waste Pro is the City's garbage and recycling service provider. Call Waste Pro for recycling carts or for customer assistance.

**Water Services**

**772-873-6400**

Contact the City of Port St. Lucie Utility Systems Department for service or for an emergency. Contact 772-340-0220 for the St. Lucie West Services District.

**Website Government**

**772-871-5225**

Log on to the City's official website at [www.cityofpsl.com](http://www.cityofpsl.com) to get the most current information about the City. Visitors and residents can submit comments, compliments and requests to 1PSL.

**Zoning**

**772-871-5212**

For zoning matters, or to find out what is under construction in the City, what type of structure can be built on vacant land or what type of business may be located at a specific address, contact the Planning & Zoning Department.

A  
B  
C  
D  
E  
F  
G  
H  
I  
J  
K  
L  
M  
N  
O  
P  
Q  
R  
S  
T  
U  
V  
W  
X  
Y  
Z



The Port District



**City Council - 772-871-6169**

Mayor Gregory J. Craveo

Vice Mayor Shannon Martin, District 3

Councilwoman Stephanie Morgan, District 1

Councilman John Carvell, District 2

Councilwoman Jolen Caraballo, District 4

**Russ Blackburn, City Manager**  
772-871-5163

**Jesus Merejo, Chief Assistant City Manager**  
772-873-6417

**David Graham, Assistant City Manager**  
772-344-4309

 CityofPSL  
 @CityPortStLucie  
 CityPortStLucie  
 CityofPSL  
 City of Port St. Lucie  
[www.CityofPSL.com](http://www.CityofPSL.com)



St. Lucie River/ G2S Water Quality Project at McCarty Ranch



Florida International University/Corredor Biosciences Institute for Molecular Studies

Cleveland Clinic Tradition Hospital at Southern Grove Jobs Corridor



Crescent